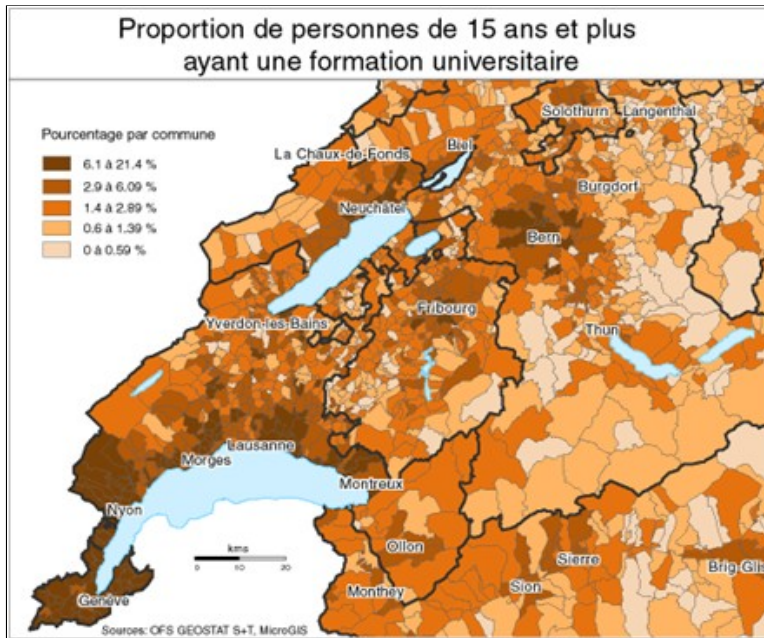


Geostatistical Data ZipCode+ Data

Variables description



Index

ZipCodes+ Data (statistical data)

<i>ZipCodes+ COMPACT - General purpose data</i>	<i>p.3</i>
<i>ZipCodes+ COMPACT Light - General purpose data</i>	<i>p.4</i>
<i>ZipCodes+ DEMO - Demographic variables</i>	<i>p.5</i>
<i>ZipCodes+ SOC-ECO - Socio-Economic variables</i>	<i>p.8</i>
<i>ZipCodes+ WORK-FORCE - Socio-economical data at the workplace</i>	<i>p.11</i>
<i>ZipCodes+ MOVE - Commuters data</i>	<i>p.13</i>
<i>ZipCodes+ REVENU - Estimated income data</i>	<i>p.15</i>
<i>ZipCodes+ PURCHASEPOWER - estimated available income data</i>	<i>p.16</i>
<i>ZipCodes+ PopTrend - Pop evolution variables</i>	<i>p.19</i>
<i>ZipCodes+ BUILT - Housing structure variables</i>	<i>p.22</i>
<i>ZipCodes+ TOURISM - Nights and arrivals data</i>	<i>p.26</i>
<i>ZipCodes+ NOGA - Number of firms by sectors</i>	<i>p.27</i>
<i>ZipCodes+ NOGA Trend - Firms evolution variables</i>	<i>p.30</i>

ZipCodes[®] COMPACT - General purpose data

**Sources: Federal Population Census (RPF) - 12.2000 / OFS
Federal Administration of Contributions (AFC) - 2006**

Variables	Description
PTOT	Total population
P0014M	Males aged less than 15
P0014F	Females aged less than 15
P0014	Population aged less than 15
P1539M	Males aged between 15 and 39
P1539F	Females aged between 15 and 39
P1539	Population aged between 15 and 39
P4064M	Males aged between 40 and 64
P4064F	Females aged between 40 and 64
P4064	Population aged between 40 and 64
P65PM	Males aged 65 and more
P65PF	Females aged 65 and more
P65P	Population aged 65 and more
PM	Males
PF	Females
HH	Households
HHCOLL	Collective households
HHPRIV	Private households
HHP1P	Private 1-person households
HHP2P	Private 2-persons households
HHP3P	Private 3-persons households
HHP4P	Private 4-persons households
HHP5P	Private 5-persons households
HHP6MP	Private 6-persons and more households
Socio-professional categories	
PCSP1	Superior (Managers, liberal profs, knowledge workers, middle management)
PCSP2	Middle (Intermediates, independents (inc. farmers), skilled workers)
PCSP3	Inferior (Unqualified, unskilled)
ADPRIM	Actives in the primary sector (est)
ADSEC	Actives in the secondary sector (est)
ADTERT	Actives in the tertiary sector (est)
IQMED	Estimated median annual income per household (net in kCHF)
RPDENS	Population density
RP0014M	Percentage of males aged less than 15
RP0014F	Percentage of females aged less than 16
RP0014	Percentage of persons aged less than 15
RP1539M	Percentage of males aged between 15 and 39
RP1539F	Percentage of females aged between 15 and 39
RP1539	Percentage of persons aged between 15 and 39
RP4064M	Percentage of males aged between 40 and 64
RP4064F	Percentage of females aged between 40 and 64
RP4064	Percentage of persons aged between 40 and 64
RP65PM	Percentage of males aged 65 and more
RP65PF	Percentage of females aged 65 and more
RP65P	Percentage of persons aged 65 and more
RPM	Percentage of males
RPF	Percentage of females
RHHCOLL	Percentage of collective households
RHHPRIV	Percentage of private households
RHHP1P	Percentage of private 1-person households
RHHP2P	Percentage of private 2-persons households
RHHP3P	Percentage of private 3-persons households
RHHP4P	Percentage of private 4-persons households
RHHP5P	Percentage of private 5-persons households
RHHP6MP	Percentage of private 6-persons and more households
RPCSP1	Percentage of actives in superior positions
RPCSP2	Percentage of actives in middle positions
RPCSP3	Percentage of actives in inferior positions

ZipCodes+ COMPACT LIGHT - General purpose data

Sources: Federal Population Census (RPF) - 12.2000 / OFS

Federal Administration of Contributions (AFC) - 2006

Variables	Description
PTOT	Total population
P0014M	Males aged less than 15
P0014F	Females aged less than 15
P0014	Population aged less than 15
P1539M	Males aged between 15 and 39
P1539F	Females aged between 15 and 39
P1539	Population aged between 15 and 39
P4064M	Males aged between 40 and 64
P4064F	Females aged between 40 and 64
P4064	Population aged between 40 and 64
P65PM	Males aged 65 and more
P65PF	Females aged 65 and more
P65P	Population aged 65 and more
PM	Males
PF	Females
HH	Households
HHCOLL	Collective households
HHPRIV	Private households
HHP1P	Private 1-person households
HHP2P	Private 2-persons households
HHP3P	Private 3-persons households
HHP4P	Private 4-persons households
HHP5P	Private 5-persons households
HHP6MP	Private 6-persons and more households
RPDENS	Population density
RP0014M	Percentage of males aged less than 15
RP0014F	Percentage of females aged less than 16
RP0014	Percentage of persons aged less than 15
RP1539M	Percentage of males aged between 15 and 39
RP1539F	Percentage of females aged between 15 and 39
RP1539	Percentage of persons aged between 15 and 39
RP4064M	Percentage of males aged between 40 and 64
RP4064F	Percentage of females aged between 40 and 64
RP4064	Percentage of persons aged between 40 and 64
RP65PM	Percentage of males aged 65 and more
RP65PF	Percentage of females aged 65 and more
RP65P	Percentage of persons aged 65 and more
RPM	Percentage of males
RPF	Percentage of females
RHHCOLL	Percentage of collective households
RHHPRIV	Percentage of private households
RHHP1P	Percentage of private 1-person households
RHHP2P	Percentage of private 2-persons households
RHHP3P	Percentage of private 3-persons households
RHHP4P	Percentage of private 4-persons households
RHHP5P	Percentage of private 5-persons households
RHHP6MP	Percentage of private 6-persons and more households
RPCSP1	Percentage of actives in superior positions
RPCSP2	Percentage of actives in middle positions
RPCSP3	Percentage of actives in inferior positions

ZipCodes[®] DEMO - Demographic variables
Sources: Federal population census - 12.2000 / OFS

Variables	Description
PTOT	Total of the population resident permanent
P0001M	Men aged 0-1
P0001F	Women aged 0-1
P0001	Population aged 0-1
P0104M	Men aged 1-4
P0104F	Women aged 1-4
P0104	Population aged 1-4
P0509M	Men aged 5-9
P0509F	Women aged 5-9
P0509	Population aged 5-9
P1014M	Men aged 10-14
P1014F	Women aged 10-14
P1014	Population aged 10-14
P1519M	Men aged 15-19
P1519F	Women aged 15-19
P1519	Population aged 15-19
P2024M	Men aged 20-24
P2024F	Women aged 20-24
P2024	Population aged 20-24
P2529M	Men aged 25-29
P2529F	Women aged 25-29
P2529	Population aged 25-29
P3034M	Men aged 30-34
P3034F	Women aged 30-34
P3034	Population aged 30-34
P3539M	Men aged 35-39
P3539F	Women aged 35-39
P3539	Population aged 35-39
P4044M	Men aged 40-44
P4044F	Women aged 40-44
P4044	Population aged 40-44
P4549M	Men aged 45-49
P4549F	Women aged 45-49
P4549	Population aged 45-49
P5054M	Men aged 50-54
P5054F	Femmes entre 50 et 54 ans
P5054	Population aged 50-54
P5559M	Men aged 55-59
P5559F	Women aged 55-59
P5559	Population aged 55-59
P6064M	Men aged 60-64
P6064F	Women aged 60-64
P6064	Population aged 60-64
P6569M	Men aged 65-69
P6569F	Women aged 65-69
P6569	Population aged 65-69
P7074M	Men aged 70-74
P7074F	Women aged 70-74
P7074	Population aged 70-74
P7579M	Men aged 75-79
P7579F	Women aged 75-79
P7579	Population aged 75-79
P8084M	Men aged 80-84
P8084F	Women aged 80-84
P8084	Population aged 80-84
P8589M	Men aged 85-89
P8589F	Women aged 85-89
P8589	Population aged 85-89
P9094M	Men aged 90-94
P9094F	Women aged 90-94
P9094	Population aged 90-94

P9599M	Men aged 95-99
P9599F	Women aged 95-99
P9599	Population aged 95-99
P100104M	Men aged 100-104
P100104F	Women aged 100-104
P100104	Population aged 100-104
P105MM	Men aged 105 and more
P105MF	Women aged 105 and more
P105M	Population aged 105 and more
P0014M	Men aged 0-14
P0014F	Women aged 0-14
P0014	Population aged 0-14
P1539M	Men aged 15-39
P1539F	Women aged 15-39
P1539	Population aged 15-39
P4064M	Men aged 40-64
P4064F	Women aged 40-64
P4064	Population aged 40-64
P65PM	Men aged 65 and more
P65PF	Women aged 65 and more
P65P	Population aged 65 and more
PM	Total Men
PF	Total Women
PMSSIN	Single people
PMSMARR	Married, incl. Separate
PMSWID	Widowers
PMSDIV	Divorced
PRPROT	Protestants
PRCATH	Catholics
PROCHR	Other christians
PRJEW	Jewish
PRMUSL	Muslims
PROTH	Other (mainly asian religions)
PRNOREL	Without religion
PRUNKN	No indication
PLGER	Mother tongue German
PLFRA	Mother tongue French
PLITA	Mother tongue Italian
PLRUM	Mother tongue Rumanantsch
PLENG	Mother tongue English
PLOTH	Other mother tongues
PNSWISS	Swiss citizens
PNWEUR	Western europeans
PNSEUR	Southern europeans
PNEEUR	Central and eastern europeans
PNNEUR	Northern europeans
PNNAM	North americans
PNLATAM	Latin americans
PNSUBAFR	Subsaharan africans
PNMEAST	Middle Easterners and north africans
PNASIA	Asians, excluding Middle East
PNOCE	Oceanians
PNNON	No citizenship
HH	Total households
HHCOLL	Collective households
HHPRIV	Private households
HHFAM	Familial households
HHNFAM	Non-familial households (persons living alone, couples without children, roommates...)
HHP1P	Private 1-person households
HHP2P	Private 2-persons households
HHP3P	Private 3-persons households
HHP4P	Private 4-persons households
HHP5P	Private 5-persons households
HHP6MP	Private 6-persons and more households
PHHPRIV	Persons living in private households

LPTOT	Population's natural logarithm
RPDENS	Population density
RP0014M	Percentage of males aged less than 15
RP0014F	Percentage of females aged less than 16
RP0014	Percentage of persons aged less than 15
RP1539M	Percentage of males aged between 15 and 39
RP1539F	Percentage of females aged between 15 and 39
RP1539	Percentage of persons aged between 15 and 39
RP4064M	Percentage of males aged between 40 and 64
RP4064F	Percentage of females aged between 40 and 64
RP4064	Percentage of persons aged between 40 and 64
RP65PM	Percentage of males aged 65 and more
RP65PF	Percentage of females aged 65 and more
RP65P	Percentage of persons aged 65 and more
RPM	Percentage of males
RPF	Percentage of females
RPSSIN	Percentage of singles
RPMSMARR	Percentage of married persons, incl. separate
RPMSWID	Percentage of widowers
RPMSDIV	Percentage of divorced
RPRPROT	Percentage of protestants
RPRCATH	Percentage of catholics
RPROCHR	Percentage of other christians
RPRJEW	Percentage of jewish people
RPRMUSL	Percentage of muslims
RPROTH	Percentage of other (mainly asian religions)
RPRNOREL	Percentage of people without religion
RPRUNKN	Percentage of unknown
RPLGER	Percentage of persons with german as mother tongue
RPLFRA	Percentage of persons with french as mother tongue
RPLITA	Percentage of persons with italian as mother tongue
RPLRUM	Percentage of persons with rumantsch as mother tongue
RPLENG	Percentage of persons with english as mother tongue
RPLOTH	Percentage of persons with other languages as mother tongue
RPNSWISS	Percentage of swiss
RPNWEUR	Percentage of western europeans
RPNSEUR	Percentage of southern europeans
RPNEEUR	Percentage of central and eastern europeans
RPNNEUR	Percentage of northern europeans
RPNNAM	Percentage of north americans
RPNLATAM	Percentage of latin americans
RPNSUBAFR	Percentage of subsaharan africans
RPNMEAST	Percentage of middle easterners and north africans
RPNASIA	Percentage of asians, excluding Middle East
RPNOCE	Percentage of oceanians
RPNNON	Percentage of people without citizenship
RHHCOLL	Percentage of collective households
RHHPRIV	Percentage of private households
RHHFAM	Percentage of familial households
RHHNFAM	Percentage of non-familial households
RHHP1P	Percentage of private 1-person households
RHHP2P	Percentage of private 2-persons households
RHHP3P	Percentage of private 3-persons households
RHHP4P	Percentage of private 4-persons households
RHHP5P	Percentage of private 5-persons households
RHHP6MP	Percentage of private 6-persons and more households
PRHHPRIV	Mean number of persons per private household
REFFEM	Mean number of children per female (synthetic index)
RDEP	Dependency rate (non-active age classes on active age classes)
RREN	Renewal rate (young actives on old actives)
RJV	Young/Old ratio (children on retirees)
RMASC	Sex ratio (males per 100 females)

ZipCodes[®] SOC-ECO - Socio-Economic variables
Sources: Federal Population Census - 12.2000 / OFS

Variables	Description
PTOT	Residential population
PM	Male
PF	Female

Spoken languages

PLUGER	german / dialect only
PLUFRA	french only
PLUITA	italian only
PLURUM	rumantsch only
PLUENG	english only
PLUOTH	other foreign language
PLU2GF	german and french
PLU2GI	german and italian
PLU2GR	german and rumantsch
PLU2GE	german and english
PLU2GO	german and other language
PLU2FI	french and italian
PLU2FE	french and english
PLU2FO	french and other language
PLU2IE	italian and english
PLU2IO	italian and other language
PLU2RO	Rumantsch and other language
PLU3M	Another combination or more than two languages
PLUUNKN	Without indication of the usually spoken language

Total of speakers

PLOGGER	German
PLOCFRA	French
PLOCITA	Italien
PLOCNUM	Romanche
PLOCENG	English

Socio-professional categories

PCDIR	Managing positions
PCLIB	Liberal professions
PCFARM	Farmers
PCIND	Other independents
PCMGKN	Knowledge workers and middle management
PCINTM	Intermediate professions
PCEMP	Qualified employees (white collars)
PCWORK	Qualified workers (blue collars)
PCNQUAL	Not qualified (est.)

Education level

PFFORM	Uneducated (unfinished formation) (est.)
PFOBL	Mandatory school only
PFGEN	General purpose school
PFPFROF	Professional formation, former apprentice
PFMAT	Federal maturity (A-Level) (est)
PFNORM	School for education professionals (est)
PFPFSSF	Superior professional formation (est)
PFPFSSS	Superior professional school (est)
PFFSSUPS	Superior specialized school (est)
PFFUNI	University degree (est)
PFFSCHOOL	School age
PFFPRESCH	Pre-school age
AD	Active Population
ADM	Male active population
ADF	Female active population
ADOCC	Occupied actives
ADOCCM	Occupied active males
ADOCCF	Occupied active females
ADFTOCC	Full-time occupied actives
ADFTOCCM	Full-time occupied active males
ADFTOCCF	Full-time occupied active females

ADPTOCC	Part-time occupied actives
ADPTOCCM	Part-time occupied active males
ADPTOCCF	Part-time occupied active females
ADPFORM	Persons currently in professional formation (apprentices)
ADPFORMM	Males currently in professional formation (apprentices)
ADPFORMF	Females currently in professional formation (apprentices)
ADUNEMP	Unemployed
ADUNEMPM	Unemployed males
ADUNEMPF	Unemployed females
ADOTH	Other actives (without indication)
ADOTHM	Other active males (without indication)
ADOTHF	Other active females (without indication)
PFORM	People in formation
PFORMM	Men in formation
PFORMF	Women in formation
PVOLUN	People carrying on a voluntary activity
PVOLUNM	Men carrying on a voluntary activity
PVOLUNF	Women carrying on a voluntary activity
PHOUSE	Hometenders
PHOUSEM	Hometending males
PHOUSEF	Hometending females
PRET	Retired people
PRETM	Retired men
PRETF	Retired women
POTH	Other non actives
POTHM	Other non active men
POTHF	Other non active women
P0014	People less than 15 years old
P0014M	Men less than 15 years old
P0014F	Women less than 15 years old

Occupation rate

ADWH6M	less than 6 hours per week (est)
ADWH619	6 to 19 hours per week (est)
ADWH2039	20 to 39 hours per week (est)
ADWH4045	40 to 45 hours per week (est)
ADWH46M	46 hours per week and more (est)
ADPRIM	Actives in the primary sector (est)
ADSEC	Actives in the secondary sector (est)
ADTERT	Actives in the tertiary sector (est)
RPLUGER	Percentage of german speakers / dialect only
RPLUFRA	Percentage of french speakers only
RPLUITA	Percentage of italian speakers only
RPLURUM	Percentage of rumantsch speakers only
RPLUENG	Percentage of english speakers only
RPLUOTH	Percentage of speakers of an other foreign language
RPLU2GF	Percentage of german and french speakers
RPLU2GI	Percentage of german and italian speakers
RPLU2GR	Percentage of german and rumantsch speakers
RPLU2GE	Percentage of german and english speakers
RPLU2GO	Percentage of german and other language speakers
RPLU2FI	Percentage of french and italian speakers
RPLU2FE	Percentage of french and english speakers
RPLU2FO	Percentage of french and other language speakers
RPLU2IE	Percentage of italian and english speakers
RPLU2IO	Percentage of italian and other language speakers
RPLU2RO	Percentage of rumantsch and other language speakers
RPLU3M	Percentage of speakers of another combination of language or more than 2 languages
RPLUUNKN	Percentage of speakers without indication of spoken language
RPLOCGER	Percentage of german speakers (total)
RPLOCFRA	Percentage of french speakers (total)
RPLOCITA	Percentage of italian speakers (total)
RPLOCRUM	Percentage of rumantsch speakers (total)
RPLOCENG	Percentage of english speakers (total)
RPCDIR	Percentage of managers (upper management, board members)
RPCLIB	Percentage of liberal professions

RPCFARM	Percentage of farmers
RPCIND	Percentage of other independents
RPCMGKN	Percentage of knowledge workers and middle management
RPCINTM	Percentage of intermediate professions
RPCEMP	Percentage of qualified employees
RPCWORK	Percentage of qualified workers
RPCQUAL	Percentage of unqualified (est.)
RPFNFORM	Percentage of people with no formation (est.)
RFOBL	Percentage of people with mandatory school only (est.)
RPFGEN	Percentage of people with general purpose schooling
RPFPROF	Percentage of people with professional formation (former apprentices)
RPFMAT	Percentage of people holding a federal maturity (A-Level)
RPFNORM	Percentage of people with a teacher diploma
RPFPRSF	Percentage of people with a superior professional formation
RPFPRSS	Percentage of people with a superior professional school diploma
RPFSSUPS	Percentage of people with a university-like superior school diploma
RPFUNI	Percentage of university degree holders
RAD	Percentage of actives in the total population
RADM	Percentage of actives in the male population
RADF	Percentage of actives in the female population
RADOC	Percentage of occupied actives
RADOCM	Percentage of occupied active males
RADOFC	Percentage of occupied active females
RADFTOC	Percentage of full-time occupied actives
RADFTOCM	Percentage of full-time occupied active males
RADFTOCF	Percentage of full-time occupied active females
RADPTOC	Percentage of part-time occupied actives
RADPTOCM	Percentage of part-time occupied active males
RADPTOCF	Percentage of part-time occupied active females
RADPFORF	Percentage of persons currently in professional formation (apprentices)
RADPFORMM	Percentage of males currently in professional formation (apprentices)
RADPFORMF	Percentage of females currently in professional formation (apprentices)
RADUNEMP	Percentage of unemployed
RADUNEM	Percentage of unemployed men
RADUNEF	Percentage of unemployed women
RADOTH	Percentage of other actives (without indication)
RADOTHM	Percentage of other active men (without indication)
RADOTHF	Percentage of other active women (without indication)
RPFORF	Percentage of people in formation
RPFORMM	Percentage of men in formation
RPFORMF	Percentage of women in formation
RPVOLUN	Percentage of people carrying on a voluntary activity
RPVOLUNM	Percentage of men carrying on a voluntary activity
RPVOLUNF	Percentage of women carrying on a voluntary activity
RPHOUSE	Percentage of hometenders
RPHOUSEM	Percentage of hometending men
RPHOUSEF	Percentage of hometending women
RPRET	Percentage of retired people
RPRETM	Percentage of retired men
RPRETF	Percentage of retired women
RPOTH	Percentage of other non actives
RPOTHM	Percentage of other non active men
RPOTHF	Percentage of other non active women
RADH6M	Percentage of people working less than 6 hours per week (est.)
RADH619	Percentage of people working 6 to 19 hours per week (est.)
RADH2039	Percentage of people working 20 to 39 hours per week (est.)
RADH4045	Percentage of people working 40 to 45 hours per week (est.)
RADH46M	Percentage of people working 46 hours and more per week (est.)
RADPRIM	Percentage of actives in the primary sector (est)
RADSEC	Percentage of actives in the secondary sector (est)
RADTERT	Percentage of actives in the tertiary sector (est)

Variables	Description
AWTOT	Total active population
Language spoken at work	
AWLREG	national local language
AWLONAT	other national language
AWLENG	english
AWLOTH	other language
AWL2RN	national local language and other national language
AWL2RE	national local language and english
AWL3	national local language, other national language and english
AWLOTH2	another combination
AWLUNKN	without indication
Socio-professional categories	
AWCDIR	Managers
AWCLIB	Liberal professions
AWCFARM	Farmers
AWCIND	Other independents
AWCMGKN	Knowledge workers and middle management
AWCINTM	Intermediate professions
AWCEMP	Qualified employees
AWCWORK	Qualified workers
AWCNQUAL	Unqualified (est.)
Educational level	
AWNFORM	Uneducated (unfinished formation) (est.)
AWFOBL	Mandatory school only
AWFGEN	General purpose school
AWFPROF	Professional formation, former apprentice
AWFMAT	Federal maturity (A-Level) (est)
AWFNORM	School for education professionals (est)
AWFPRSF	Superior professional formation (est)
AWFPRSS	Superior professional school (est)
AWFSSUPS	Superior specialized school (est)
AWFUNI	University degree (est)
AWOCC	Occupied actives
AWOCCM	Occupied active males
AWOCCF	Occupied active females
AWFTOCC	Full-time occupied actives
AWFTOCCM	Full-time occupied active males
AWFTOCCF	Full-time occupied active females
AWPTOCC	Part-time occupied actives
AWPTOCCM	Part-time occupied active males
AWPTOCCF	Part-time occupied active females
AWPFORM	Persons currently in professional formation (apprentices)
AWPFORMM	Males currently in professional formation (apprentices)
AWPFORMF	Females currently in professional formation (apprentices)
AWOTH	Other actives (without indication)
AWOTHM	Other active males (without indication)
AWOTHF	Other active females (without indication)
Work hours	
AWWH6M	less than 6 hours per week (est)
AWWH619	6 to 19 hours per week (est)
AWWH2039	20 to 39 hours per week (est)
AWWH4045	40 to 45 hours per week (est)
AWWH46M	46 hours per week and more (est)
AWPRIM	Actives in the primary sector (est)
AWSEC	Actives in the secondary sector (est)
AWTERT	Actives in the tertiary sector (est)
Language used at work	
RAWLREG	Percentage of people using the national local language
RAWLONAT	Percentage of people using another national language
RAWLENG	Percentage of people using english
RAWLOTH	Percentage of people using another language

RAWL2RN	Percentage of people using the national local language and another national language
RAWL2RE	Percentage of people using the national local language and english
RAWL3	Percentage of people using the national local language, another national language and english
RAWLOTH2	Percentage of people using another combination of languages
RAWLUNKN	Percentage of people without any language indication
RAWCDIR	Percentage of managers (upper management, board members)
RAWCLIB	Percentage of liberal professions
RAWCFARM	Percentage of farmers
RAWCIND	Percentage of other independents
RAWCMGKN	Percentage of knowledge workers and middle management
RAWCNTM	Percentage of intermediate professions
RAWCEMP	Percentage of qualified employees
RAWCWORK	Percentage of qualified workers
RAWCNQ	Percentage of unqualified (est.)
RAWFNF	Percentage of people with no formation (est.)
RAWFOBL	Percentage of people with mandatory school only (est)
RAWFGEN	Percentage of people with general purpose schooling
RAWFPROF	Percentage of people with professional formation (former apprentices)
RAWFMAT	Percentage of people holding a federal maturity (A-Level)
RAWFNORM	Percentage of people with a teacher diploma
RAWFPRSF	Percentage of people with a superior professional formation
RAWFPRSS	Percentage of people with a superior professional school diploma
RAWFSSUPS	Percentage of people with a specialized school diploma
RAWFUNI	Percentage of university degree holders
RAWFTOC	Percentage of full-time occupied actives
RAWFTOCM	Percentage of full-time occupied active males
RAWFTOCF	Percentage of full-time occupied active females
RAWPTOC	Percentage of part-time occupied actives
RAWPTOCM	Percentage of part-time occupied active males
RAWPTOCF	Percentage of part-time occupied active females
RAWPFRM	Percentage of persons currently in professional formation (apprentices)
RAWPFRMM	Percentage of males currently in professional formation (apprentices)
RAWPFRMF	Percentage of females currently in professional formation (apprentices)
RAWOTH	Percentage of other actives
RAWOTHM	Percentage of other active men
RAWOTHF	Percentage of other active women
RAWWH6M	Percentage of people working less than 6 hours per week (est.)
RAWWH619	Percentage of people working 6 to 19 hours per week (est.)
RAWWH2039	Percentage of people working 20 to 39 hours per week (est.)
RAWWH4045	Percentage of people working 40 to 45 hours per week (est.)
RAWWH46M	Percentage of people working 46 hours and more per week (est.)
RAWPRIM	Percentage of actives in the primary sector (est)
RAWSEC	Percentage of actives in the secondary sector (est)
RAWTERT	Percentage of actives in the tertiary sector (est)

ZipCodes⁺ MOVE - Commuters data
Sources: Federal population census - 12.2000 / OFS

Variables	Description
PTOT	Total residential population
ADOC	Number of active persons (at home)
ADSGDE	Number of active persons (at home) working in the same commune (non-commuters)
ADOGDE	Number of active persons (at home) working in another commune (commuters at home)
ADPRIM	Number of active persons (at home) in the primary sector
ADSEC	Number of active persons (at home) in the secondary sector
ADTERT	Number of active persons (at home) in the tertiary sector
AWTOT	Number of active persons (at the workplace)
AWSGDE	Number of active persons (at the workplace) living in the same commune (non-commuters)
AWOGDE	Number of active persons (at the workplace) living in another commune (commuters at work)
AWPRIM	Number of active persons (at the workplace) in the primary sector
AWSEC	Number of active persons (at the workplace) in the secondary sector
AWTERT	Number of active persons (at the workplace) in the tertiary sector

Means of transportation used between home & workplace, censused at the home: job holders

ADNNONE	Without commute (home and workplace at the same location)
ADNFOOT	Walk
ADNSOFT	Soft mobility only (bicycle, roller...)
ADNCOLL	Public transportation only (trains, buses, collective transportation, company transportation)
ADNMOT	Individual motorized transportation only (car, motorcycle, moped, car-pools)
ADNSC	Combination between soft and collective
ADNSM	Combination between soft and individual
ADNCM	Combination between collective and individual
ADNOTH	Complex combination (more than three means)

Means of transportation used between home and school, censused at home: students, etc.

FDNNONE	Without commute (home and school at the same location)
FDNFOOT	Walk
FDNSOFT	Soft mobility only (bicycle, roller...)
FDNCOLL	Public transportation only (trains, buses, collective transportation, company transportation)
FDNMOT	Individual motorized transportation only (car, motorcycle, moped, car-pools)
FDNSC	Combination between soft and collective
FDNSM	Combination between soft and individual
FDNCM	Combination between collective and individual
FDNOTH	Complex combination (more than three means)

Means of transportation used between home & workplace, censused at the workplace: job holders

AWNNONE	Without commute (home and workplace at the same location)
AWNFOOT	Walk
AWNSOFT	Soft mobility only (bicycle, roller...)
AWNCOLL	Public transportation only (trains, buses, collective transportation, company transportation)
AWNMOT	Individual motorized transportation only (car, motorcycle, moped, car-pools)
AWNSC	Combination between soft and collective
AWNSM	Combination between soft and individual
AWNCM	Combination between collective and individual
AWNOTH	Complex combination (more than three means)

Means of transportation used between home and workplace, censused at home: job holders

RADNNONE	Perc. of active persons without commute
RADNFOOT	Perc. of active persons commuting by walk
RADNSOFT	Perc. of active persons commuting by soft mobility only
RADNCOLL	Perc. of active persons commuting by public transportation only
RADNMOT	Perc. of active persons commuting by individual motorized transportation only
RADNSC	Perc. of active persons commuting by combination between soft and collective
RADNSM	Perc. of active persons commuting by combination between soft and individual
RADNCM	Perc. of active persons commuting by combination between collective and individual
RADNOTH	Perc. of active persons commuting by complex combination

Means of transportation used between home & school, censused at home: students, schoolchildren

PFDNNONE	Perc. of students / schoolchildren without commute
PFDNFOOT	Perc. of students / schoolchildren commuting by walk
PFDNSOFT	Perc. of students / schoolchildren commuting by soft mobility only

PFDNCOLL	Perc. of students / schoolchildren commuting by public transportation only
PFDNMOT	Perc. of students / schoolchildren commuting by individual motorized transportation only
PFDNSC	Perc. of students / schoolchildren commuting by combination between soft and collective
PFDNSM	Perc. of students / schoolchildren commuting by combination between soft and individual
PFDNCM	Perc. of students / schoolchildren commuting by combination between collective and individual
PFDNOTH	Perc. of students / schoolchildren commuting by complex combination

Means of transportation used between home & workplace, censused at the workplace: job holders

RAWNNONE	Perc. of active persons without commute
RAWNFOOT	Perc. of active persons commuting by walk
RAWNSOFT	Perc. of active persons commuting by soft mobility only
RAWNCOLL	Perc. of active persons commuting by public transportation only
RAWNMOT	Perc. of active persons commuting by individual motorized transportation only
RAWNSC	Perc. of active persons commuting by combination between soft and collective
RAWNSM	Perc. of active persons commuting by combination between soft and individual
RAWNCM	Perc. of active persons commuting by combination between collective and individual
RAWNOTH	Perc. of active persons commuting by complex combination
RADNAV	Perc. of commuters at home
RADNNAV	Perc. of non-commuters at home
RAWNAV	Perc. of commuters at the workplace
RAWNNAV	Perc. of non-commuters at the workplace
RJOBACT	Rate of workplaces / active persons at home
RJOBACT1	Rate of workplaces / active persons at home, primary sector
RJOBACT2	Rate of workplaces / active persons at home, secondary sector
RJOBACT3	Rate of workplaces / active persons at home, tertiary sector

Variables	Description
PTOT	Total population
CTTOT	Number of households subject to taxation
CT25L	Est. number of taxable households where annual net income is below 25000 CHF
CT2539	Est. number of taxable households where annual net income is between 25000 and 39999 CHF
CT4059	Est. number of taxable households where annual net income is between 40000 and 59999 CHF
CT6079	Est. number of taxable households where annual net income is between 60000 and 79999 CHF
CT8099	Est. number of taxable households where annual net income is between 80000 and 99999 CHF
CT100149	Est. number of taxable households where annual net income is between 100000 and 149999 CHF
CT150299	Est. number of taxable households where annual net income is between 150000 and 299999 CHF
CT300M	Est. number of taxable households where annual net income is more than 300000 CHF
CT_ACT	Est. number of active households
CT_RENT	Est. number of retired or without activity private households
CT_CPL	Est. number of couple households
CT_FAM	Est. number of family households
CT_LON	Est. number of households made by persons living alone
MEANREV	Mean annual income of taxable households
MEANREV_ACT	Mean annual income of active households
MEANREV_RENT	Mean annual income of retired/not active households
MEANREV_CPL	Mean annual income of couple households
MEANREV_FAM	Mean annual income of family households
MEANREV_LON	Mean annual income of households made by persons living alone
MEDREV	Median annual income of taxable households
MEDREV_ACT	Median annual income of active households
MEDREV_RENT	Median annual income of retired/not active households
MEDREV_CPL	Median annual income of couple households
MEDREV_FAM	Median annual income of family households
MEDREV_LON	Median annual income of households made by persons living alone
IP25	Est. probability that a given household earns less than 20000 CHF net a year
IP40	Est. probability that a given household earns less than 40000 CHF net a year
IP60	Est. probability that a given household earns less than 60000 CHF net a year
IP80	Est. probability that a given household earns less than 80000 CHF net a year
IP100	Est. probability that a given household earns less than 100000 CHF net a year
IP150	Est. probability that a given household earns less than 150000 CHF net a year
IP300	Est. probability that a given household earns less than 300000 CHF
IQ10	1st decile of revenue distribution (10% of hh. earn less than this figure in kCHF (yearly netto))
IQ25	1st quartile of revenue distribution (25% of hh. earn less than this figure in kCHF (yearly netto))
IQMED	Median revenue (half of hh. earn less than this figure in kCHF (yearly netto))
IQ75	3rd quartile of revenue distribution (25% of hh. earn more than this figure in kCHF (yearly netto))
IQ90	9th decile of revenue distribution (10% of hh. earn more than this figure in kCHF (yearly netto))
PDEDREV	Deductible part of the income, in % (modesty indicator)
TAXRET	Federal Direct Tax return rate, in % (richness indicator)
RI15030	Number of households earning more than 150 kCHF annual net income per 100 households earning less than 30 kCHF annual net income
RIPHALF	Part of the total net annual income earned by the poorer half of households
RIP20	Income share going to the poorest fifth of households (in %)
RIR20	Income share going to the richest fifth of households (in %)
INDRICH	Synthetic income index
PCT25L	Est. perc. of private households where annual net income is below 25000 CHF
PCT2539	Est. perc. of private households where annual net income is between 25000 and 39999 CHF
PCT4059	Est. perc. of private households where annual net income is between 40000 and 59999 CHF
PCT6079	Est. perc. of private households where annual net income is between 60000 and 79999 CHF
PCT8099	Est. perc. of private households where annual net income is between 80000 and 99999 CHF
PCT100149	Est. perc. of private households where annual net income is between 100000 and 149999 CHF
PCT150299	Est. perc. of private households where annual net income is between 150000 and 299999 CHF
PCT300M	Est. perc. of private households where annual net income is 300000 CHF or more

Sources: Federal Administration of Contributions (revenue service) 2006, Cantonal revenue services 2009, Federal Office for Social Insurances 2009, Federal Census of the Population and Buildings 2000, Federal Statistical Office 2003/2008

Variables	Description
CT_TOT	Number of fiscal households
MEANREV	Mean net income (in thousands CHF per year), all fiscal households
MEANDISPREV	Mean available income (in thousands CHF per year), all fiscal households
MEANDISPIND	Indexed mean available income, all fiscal households, swiss mean = 100
MEDREV	Median net income (in thousands CHF per year), all fiscal households
MEDDISPREV	Median available income (in thousands CHF per year), all fiscal households
MEDDISPIND	Indexed median available income, all fiscal households, swiss median = 100
CT_ACT	Number of active fiscal households
MEANREV_ACT	Mean net income (in thousands CHF per year), active fiscal households
MEANDISPREV_ACT	Mean available income (in thousands CHF per year), active fiscal households
MEANDISPIND_ACT	Indexed mean available income, active fiscal households, swiss mean = 100
MEDREV_ACT	Median net income (in thousands CHF per year), active fiscal households
MEDDISPREV_ACT	Median available income (in thousands CHF per year), active fiscal households
MEDDISPIND_ACT	Indexed median available income, active fiscal households, swiss median = 100
CT_PENS	Number of retired fiscal households
MEANREV_PENS	Mean net income (in thousands CHF per year), retired fiscal households
MEANDISPREV_PENS	Mean available income (in thousands CHF per year), retired fiscal households
MEANDISPIND_PENS	Indexed mean available income, retired fiscal households, swiss mean = 100
MEDREV_PENS	Median net income (in thousands CHF per year), retired fiscal households
MEDDISPREV_PENS	Median available income (in thousands CHF per year), retired fiscal households
MEDDISPIND_PENS	Indexed median available income, retired fiscal households, swiss median = 100
CT_CPL	Number of 2-persons fiscal households (couples)
MEANREV_CPL	Mean net income (in thousands CHF per year), 2-persons fiscal households (couples)
MEANDISPREV_CPL	Mean available income (in thousands CHF per year), 2-persons fiscal households (couples)
MEANDISPIND_CPL	Indexed mean available income, 2-persons fiscal households (couples), swiss mean = 100
MEDREV_CPL	Median net income (in thousands CHF per year), 2-persons fiscal households (couples)
MEDDISPREV_CPL	Median available income (in thousands CHF per year), 2-persons fiscal households (couples)
MEDDISPIND_CPL	Indexed median available income, 2-persons fiscal households (couples), swiss median = 100
CT_FAM	Number of familial fiscal households
MEANREV_FAM	Mean net income (in thousands CHF per year), familial fiscal households
MEANDISPREV_FAM	Mean available income (in thousands CHF per year), familial fiscal households
MEANDISPIND_FAM	Indexed mean available income, familial fiscal households, swiss mean = 100
MEDREV_FAM	Median net income (in thousands CHF per year), familial fiscal households
MEDDISPREV_FAM	Median available income (in thousands CHF per year), familial fiscal households
MEDDISPIND_FAM	Indexed median available income, familial fiscal households, swiss median = 100
CT_LON	Number of 1-person fiscal households (persons living alone)
MEANREV_LON	Mean net income (in thousands CHF per year), 1-person fiscal households (persons living alone)
MEANDISPREV_LON	Mean available income (in thousands CHF per year), 1-person fiscal households (persons living alone)
MEANDISPIND_LON	Indexed mean available income, 1-person fiscal households (persons living alone), swiss mean = 100
MEDREV_LON	Median net income (in thousands CHF per year), 1-person fiscal households (persons living alone)
MEDDISPREV_LON	Median available income (in thousands CHF per year), 1-person fiscal households (persons living alone)
MEDDISPIND_LON	Indexed median available income, 1-person fiscal households (persons living alone), swiss median = 100

The following additional variables are only included in the ZipCodes+ PURCHASEPOWER "PRO" version

MEANGREV	Mean gross income (in thousands CHF per year), all fiscal households
MEANFEDTREV	Mean federal taxable income (in thousands CHF per year), all fiscal households
MEANLOCTREV	Mean local taxable income (in thousands CHF per year), all fiscal households
MEANRENT	Mean rent / mortgage, all fiscal households
MEANHEALTHINS	Mean compulsory health insurance, all fiscal households
MEANFEDTAX	Federal tax on mean income (in thousands CHF per year), all fiscal households
MEANCANTAX	Cantonal tax on mean income (in thousands CHF per year), all fiscal households
MEANCOMTAX	Communal tax on mean income (in thousands CHF per year), all fiscal households
MEANCHTAX	Church tax on mean income (in thousands CHF per year), all fiscal households
MEDGREV	Median gross income (in thousands CHF per year), all fiscal households
MEDFEDTREV	Median federal taxable income (in thousands CHF per year), all fiscal households
MEDLOCTREV	Median local taxable income (in thousands CHF per year), all fiscal households
MEDRENT	Median rent / mortgage, all fiscal households
MEDFEDTAX	Federal tax on median income (in thousands CHF per year), all fiscal households
MEDCANTAX	Cantonal tax on median income (in thousands CHF per year), all fiscal households
MEDCOMTAX	Communal tax on median income (in thousands CHF per year), all fiscal households

MEDCHTAX	Church tax on median income (in thousands CHF per year), all fiscal households
MEANGREV_ACT	Mean gross income (in thousands CHF per year), active fiscal households
MEANFEDTREV_ACT	Mean federal taxable income (in thousands CHF per year), active fiscal households
MEANLOCTREV_ACT	Mean local taxable income (in thousands CHF per year), active fiscal households
MEANRENT_ACT	Mean rent / mortgage, active fiscal households
MEANHEALTHINS_ACT	Mean compulsory health insurance, active fiscal households
MEANFEDTAX_ACT	Federal tax on mean income (in thousands CHF per year), active fiscal households
MEANCANTTAX_ACT	Cantonal tax on mean income (in thousands CHF per year), active fiscal households
MEANCOMTAX_ACT	Communal tax on mean income (in thousands CHF per year), active fiscal households
MEANCHTAX_ACT	Church tax on mean income (in thousands CHF per year), active fiscal households
MEDGREV_ACT	Median gross income (in thousands CHF per year), active fiscal households
MEDFEDTREV_ACT	Median federal taxable income (in thousands CHF per year), active fiscal households
MEDLOCTREV_ACT	Median local taxable income (in thousands CHF per year), active fiscal households
MEDRENT_ACT	Median rent / mortgage, active fiscal households
MEDFEDTAX_ACT	Federal tax on median income (in thousands CHF per year), active fiscal households
MEDCANTTAX_ACT	Cantonal tax on median income (in thousands CHF per year), active fiscal households
MEDCOMTAX_ACT	Communal tax on median income (in thousands CHF per year), active fiscal households
MEDCHTAX_ACT	Church tax on median income (in thousands CHF per year), active fiscal households
MEANGREV_PENS	Mean gross income (in thousands CHF per year), retired fiscal households
MEANFEDTREV_PENS	Mean federal taxable income (in thousands CHF per year), retired fiscal households
MEANLOCTREV_PENS	Mean local taxable income (in thousands CHF per year), retired fiscal households
MEANRENT_PENS	Mean rent / mortgage, retired fiscal households
MEANHEALTHINS_PENS	Mean compulsory health insurance, retired fiscal households
MEANFEDTAX_PENS	Federal tax on mean income (in thousands CHF per year), retired fiscal households
MEANCANTTAX_PENS	Cantonal tax on mean income (in thousands CHF per year), retired fiscal households
MEANCOMTAX_PENS	Communal tax on mean income (in thousands CHF per year), retired fiscal households
MEANCHTAX_PENS	Church tax on mean income (in thousands CHF per year), retired fiscal households
MEDGREV_PENS	Median gross income (in thousands CHF per year), retired fiscal households
MEDFEDTREV_PENS	Median federal taxable income (in thousands CHF per year), retired fiscal households
MEDLOCTREV_PENS	Median local taxable income (in thousands CHF per year), retired fiscal households
MEDRENT_PENS	Median rent / mortgage, retired fiscal households
MEDFEDTAX_PENS	Federal tax on median income (in thousands CHF per year), retired fiscal households
MEDCANTTAX_PENS	Cantonal tax on median income (in thousands CHF per year), retired fiscal households
MEDCOMTAX_PENS	Communal tax on median income (in thousands CHF per year), retired fiscal households
MEDCHTAX_PENS	Church tax on median income (in thousands CHF per year), retired fiscal households
MEANGREV_CPL	Mean gross income (in thousands CHF per year), 2-persons fiscal households (couples)
MEANFEDTREV_CPL	Mean federal taxable income (in thousands CHF per year), 2-persons fiscal households (couples)
MEANLOCTREV_CPL	Mean local taxable income (in thousands CHF per year), 2-persons fiscal households (couples)
MEANRENT_CPL	Mean rent / mortgage, 2-persons fiscal households (couples)
MEANHEALTHINS_CPL	Mean compulsory health insurance, 2-persons fiscal households (couples)
MEANFEDTAX_CPL	Federal tax on mean income (in thousands CHF per year), 2-persons fiscal households (couples)
MEANCANTTAX_CPL	Cantonal tax on mean income (in thousands CHF per year), 2-persons fiscal households (couples)
MEANCOMTAX_CPL	Communal tax on mean income (in thousands CHF per year), 2-persons fiscal households (couples)
MEANCHTAX_CPL	Church tax on mean income (in thousands CHF per year), 2-persons fiscal households (couples)
MEDGREV_CPL	Median gross income (in thousands CHF per year), 2-persons fiscal households (couples)
MEDFEDTREV_CPL	Median federal taxable income (in thousands CHF per year), 2-persons fiscal households (couples)
MEDLOCTREV_CPL	Median local taxable income (in thousands CHF per year), 2-persons fiscal households (couples)
MEDRENT_CPL	Median rent / mortgage, 2-persons fiscal households (couples)
MEDFEDTAX_CPL	Federal tax on median income (in thousands CHF per year), 2-persons fiscal households (couples)
MEDCANTTAX_CPL	Cantonal tax on median income (in thousands CHF per year), 2-persons fiscal households (couples)
MEDCOMTAX_CPL	Communal tax on median income (in thousands CHF per year), 2-persons fiscal households (couples)
MEDCHTAX_CPL	Church tax on median income (in thousands CHF per year), 2-persons fiscal households (couples)
MEANGREV_FAM	Mean gross income (in thousands CHF per year), familial fiscal households
MEANFEDTREV_FAM	Mean federal taxable income (in thousands CHF per year), familial fiscal households
MEANLOCTREV_FAM	Mean local taxable income (in thousands CHF per year), familial fiscal households
MEANRENT_FAM	Mean rent / mortgage, familial fiscal households
MEANHEALTHINS_FAM	Mean compulsory health insurance, familial fiscal households
MEANFEDTAX_FAM	Federal tax on mean income (in thousands CHF per year), familial fiscal households
MEANCANTTAX_FAM	Cantonal tax on mean income (in thousands CHF per year), familial fiscal households
MEANCOMTAX_FAM	Communal tax on mean income (in thousands CHF per year), familial fiscal households
MEANCHTAX_FAM	Church tax on mean income (in thousands CHF per year), familial fiscal households
MEDGREV_FAM	Median gross income (in thousands CHF per year), familial fiscal households
MEDFEDTREV_FAM	Median federal taxable income (in thousands CHF per year), familial fiscal households
MEDLOCTREV_FAM	Median local taxable income (in thousands CHF per year), familial fiscal households
MEDRENT_FAM	Median rent / mortgage, familial fiscal households
MEDFEDTAX_FAM	Federal tax on median income (in thousands CHF per year), familial fiscal households
MEDCANTTAX_FAM	Cantonal tax on median income (in thousands CHF per year), familial fiscal households
MEDCOMTAX_FAM	Communal tax on median income (in thousands CHF per year), familial fiscal households
MEDCHTAX_FAM	Church tax on median income (in thousands CHF per year), familial fiscal households

MEANGREV_LON	Mean gross income (in thousands CHF per year), 1-person fiscal households (persons living alone)
MEANFEDTREV_LON	Mean federal taxable income (in thousands CHF per year), 1-person fiscal households (persons living alone)
MEANLOCTREV_LON	Mean local taxable income (in thousands CHF per year), 1-person fiscal households (persons living alone)
MEANRENT_LON	Mean rent / mortgage, 1-person fiscal households (persons living alone)
MEANHEALTHINS_LON	Mean compulsory health insurance, 1-person fiscal households (persons living alone)
MEANFEDTAX_LON	Federal tax on mean income (in thousands CHF per year), 1-person fiscal households (persons living alone)
MEANCANTAX_LON	Cantonal tax on mean income (in thousands CHF per year), 1-person fiscal households (persons living alone)
MEANCOMTAX_LON	Communal tax on mean income (in thousands CHF per year), 1-person fiscal households (persons living alone)
MEANCHTAX_LON	Church tax on mean income (in thousands CHF per year), 1-person fiscal households (persons living alone)
MEDGREV_LON	Median gross income (in thousands CHF per year), 1-person fiscal households (persons living alone)
MEDFEDTREV_LON	Median federal taxable income (in thousands CHF per year), 1-person fiscal households (persons living alone)
MEDLOCTREV_LON	Median local taxable income (in thousands CHF per year), 1-person fiscal households (persons living alone)
MEDRENT_LON	Median rent / mortgage, 1-person fiscal households (persons living alone)
MEDFEDTAX_LON	Federal tax on median income (in thousands CHF per year), 1-person fiscal households (persons living alone)
MEDCANTAX_LON	Cantonal tax on median income (in thousands CHF per year), 1-person fiscal households (persons living alone)
MEDCOMTAX_LON	Communal tax on median income (in thousands CHF per year), 1-person fiscal households (persons living alone)
MEDCHTAX_LON	Church tax on median income (in thousands CHF per year), 1-person fiscal households (persons living alone)

Variables	Description
P80	Total population 1980
PF80	Female 1980
PM80	Male 1980
PCH80	Swiss people 1980
PFOR80	Foreign people 1980
BIRTH80	Births 1980
DEATH80	Deaths 1980
IMM80	Arrivals 1980
EMI80	Departures 1980
P85	Total population 1985
PF85	Female 1985
PM85	Male 1985
PCH85	Swiss people 1985
PFOR85	Foreign people 1985
BIRTH85	Births 1985
DEATH85	Deaths 1985
IMM85	Arrivals 1985
EMI85	Departures 1985
P90	Total population 1990
PF90	Female 1990
PM90	Male 1990
PCH90	Swiss people 1990
PFOR90	Foreign people 1990
BIRTH90	Births 1990
DEATH90	Deaths 1990
IMM90	Arrivals 1990
EMI90	Departures 1990
P95	Total population 1995
PF95	Female 1995
PM95	Male 1995
PCH95	Swiss people 1995
PFOR95	Foreign people 1995
BIRTH95	Births 1995
DEATH95	Deaths 1995
IMM95	Arrivals 1995
EMI95	Departures 1995
P00	Total population 2000
PF00	Female 2000
PM00	Male 2000
PCH00	Swiss people 2000
PFOR00	Foreign people 2000
BIRTH00	Births 2000
DEATH00	Deaths 2000
IMM00	Arrivals 2000
EMI00	Departures 2000
P05	Total population 2005 (mean population)
PF05	Female 2005 (mean population)
PM05	Male 2005 (mean population)
PCH05	Swiss people 2005 (mean population)
PFOR05	Foreign people 2005 (mean population)
PP05	Total population 2005 (end of year permanent population)
PPF05	Female 2005 (end of year permanent population)
PPM05	Male 2005 (end of year permanent population)
PPCH05	Swiss people 2005 (end of year permanent population)
PPFOR05	Foreign people 2005 (end of year permanent population)
BIRTH05	Births 2005
DEATH05	Deaths 2005
IMM05	Arrivals 2005
EMI05	Departures 2005
P06	Total population 2006 (mean population)

PF06	Female 2006 (mean population)
PM06	Male 2006 (mean population)
PCH06	Swiss people 2006 (mean population)
PFOR06	Foreign people 2006 (mean population)
PP06	Total population 2006 (end of year permanent population)
PPF06	Female 2006 (end of year permanent population)
PPM06	Male 2006 (end of year permanent population)
PPCH06	Swiss people 2006 (end of year permanent population)
PPFOR06	Foreign people 2006 (end of year permanent population)
BIRTH06	Births 2006
DEATH06	Deaths 2006
IMM06	Arrivals 2006
EMI06	Departures 2006
P07	Total population 2007 (mean population)
PF07	Female 2007 (mean population)
PM07	Male 2007 (mean population)
PCH07	Swiss people 2007 (mean population)
PFOR07	Foreign people 2007 (mean population)
PP07	Total population 2007 (end of year permanent population)
PPF07	Female 2007 (end of year permanent population)
PPM07	Male 2007 (end of year permanent population)
PPCH07	Swiss people 2007 (end of year permanent population)
PPFOR07	Foreign people 2007 (end of year permanent population)
BIRTH07	Births 2007
DEATH07	Deaths 2007
IMM07	Arrivals 2007
EMI07	Departures 2007
P08	Total population 2008
PF08	Female 2008
PM08	Male 2008
PCH08	Swiss people 2008
PFOR08	Foreign people 2008
BIRTH08	Births 2008
DEATH08	Deaths 2008
IMM08	Arrivals 2008
EMI08	Departures 2008
P09	Total population 2009
PF09	Female 2009
PM09	Male 2009
PCH09	Swiss people 2009
PFOR09	Foreign people 2009
BIRTH09	Births 2009
DEATH09	Deaths 2009
IMM09	Arrivals 2009
EMI09	Departures 2009
P10	Total population 2010
PF10	Female 2010
PM10	Male 2010
PCH10	Swiss people 2010
PFOR10	Foreign people 2010
BIRTH10	Births 2010
DEATH10	Deaths 2010
IMM10	Arrivals 2010
EMI10	Departures 2010
P15	Total population 2015
PF15	Female 2015
PM15	Male 2015
PCH15	Swiss people 2015
PFOR15	Foreign people 2015
BIRTH15	Births 2015
DEATH15	Deaths 2015
IMM15	Arrivals 2015
EMI15	Departures 2015
P20	Total population 2020
PF20	Female 2020

PM20	Male 2020
PCH20	Swiss people 2020
PFOR20	Foreign people 2020
BIRTH20	Births 2020
DEATH20	Deaths 2020
IMM20	Arrivals 2020
EMI20	Departures 2020
P25	Total population 2025
PF25	Female 2025
PM25	Male 2025
PCH25	Swiss people 2025
PFOR25	Foreign people 2025
BIRTH25	Births 2025
DEATH25	Deaths 2025
IMM25	Arrivals 2025
EMI25	Departures 2025
P30	Total population 2030
PF30	Female 2030
PM30	Male 2030
PCH30	Swiss people 2030
PFOR30	Foreign people 2030
BIRTH30	Births 2030
DEATH30	Deaths 2030
IMM30	Arrivals 2030
EMI30	Departures 2030
P35	Total population 2035
PF35	Female 2035
PM35	Male 2035
PCH35	Swiss people 2035
PFOR35	Foreign people 2035
BIRTH35	Births 2035
DEATH35	Deaths 2035
IMM35	Arrivals 2035
EMI35	Departures 2035
P40	Total population 2040
PF40	Female 2040
PM40	Male 2040
PCH40	Swiss people 2040
PFOR40	Foreign people 2040
P50	Total population 2050
PF50	Female 2050
PM50	Male 2050
PCH50	Swiss people 2050
PFOR50	Foreign people 2050
P60	Total population 2060
PF60	Female 2060
PM60	Male 2060
PCH60	Swiss people 2060
PFOR60	Foreign people 2060

ZipCodes* BUILT - Housing structure variables
Source: Federal Housing Census - 12.2000 / OFS

Building statistics

Variables	Description
PTOT	Population totale
HHPRIV	Number of private households
PHHPRIV	Number of persons in private households
BTOT	Number of buildings with at least one dwelling unit
BOTHER	Number of buildings which principal purpose is not habitation
BEHAB	Number of buildings exclusively for habitation
BMIXHAB	Number of mixed-use buildings
BSHELT	Number of shacks
BBB19	Buildings built before 1919
BB1945	Buildings built between 1919 and 1945
BB4660	Buildings built between 1946 and 1960
BB6170	Buildings built between 1961 and 1970
BB7180	Buildings built between 1971 and 1980
BB8190	Buildings built between 1981 and 1990
BB9195	Buildings built between 1991 and 1995
BB9600	Buildings built between 1996 and 2000
BREN7180	Buildings renovated between 1971 and 1980
BREN8190	Buildings renovated between 1981 and 1990
BREN9195	Buildings renovated between 1991 and 1995
BREN9600	Buildings renovated between 1996 and 2000
BNOREN	Buildings not renovated
BCOLL	Ménage collectif (ex. prison, EMS) ou habitation de fortune
B1DW	Buildings with 1 dwelling unit
B2DW	Buildings with 2 dwelling units
B3T5DW	Buildings with 3 to 5 dwelling units
B6T9DW	Buildings with 6 to 9 dwelling units
B10T19DW	Buildings with 10 to 19 dwelling units
B20MDW	Buildings with 20 or more dwelling units
B1FL	Buildings with 1 floor
B2FL	Buildings with 2 floors
B3FL	Buildings with 3 floors
B4FL	Buildings with 4 floors
B5FL	Buildings with 5 floors
B6T9FL	Buildings with 6 to 9 floors
B10T14FL	Buildings with 10 to 14 floors (est.)
B15MFL	Buildings with 15 floors and more (est.)

Building ownership status

BOPRIV	Private ownership
BOPCOOP	Cooperative of owners
BOOCOOP	Other cooperative
BOREFD	Real estate fund
BOORECO	Other real estate company
BOBLDCO	Building company
BOINSCO	Insurance company
BOPREVCO	Retirement fund company
BOOTHFD	Other institution
BOASS	Associative
BOOTHCO	Other company
BOPUBL	Public ownership (local, state, national)
BOOTHO	Other owner

Dwelling unit statistics

DTOT	Total dwelling units
DOCCDW	Continuously occupied dwellings
DSECDW	Part-time occupied dwellings (secondary homes, holiday dwellings)
DUNOCCDW	Vacant dwellings
DOTHER	Dwelling units occupied only as address

Tenant status

DORENT	Renters
DOCCOOP	Coop members
DOFLO	Floor owners

DOBO	Building owners
DOBCOO	Building co-owners
DOSERVD	Service dwelling holders
DOFREED	Free dwelling holders
DOFBAIL	Farm bail holders
DOUNOCC	Vacant / not a dwelling unit (address)

Dwelling area

DA20L	Area less than 20 m2 and unknown area
DA2039	From 20 to 39.9 m2
DA4059	From 40 to 59.9 m2
DA6079	From 60 to 79.9 m2
DA8099	From 80 to 99.9 m2
DA100119	From 100 to 119.9 m2
DA120139	From 120 to 139.9 m2
DA140159	From 140 to 159.9 m2
DA160179	From 160 to 179.9 m2
DA180199	From 180 to 199.9 m2
DA200M	200 m2 and more

Number of rooms by dwelling

DRO1	1 room (no bedroom)
DRO2	2 rooms (1 bedroom)
DRO3	3 rooms (2 bedrooms)
DRO4	4 rooms (3 bedrooms)
DRO5	5 rooms (4 bedrooms)
DRO6	6 rooms (5 bedrooms)
DRO7M	7 rooms (6 bedrooms) and more
PD1R	Number of persons inhabiting a 1-room apartment
PD2R	Number of persons inhabiting a 2-rooms apartment
PD3R	Number of persons inhabiting a 3-rooms apartment
PD4R	Number of persons inhabiting a 4-rooms apartment
PD5R	Number of persons inhabiting a 5-rooms apartment
PD6R	Number of persons inhabiting a 6-rooms apartment
PD7MR	MR Number of persons inhabiting a 7-rooms or bigger apartment
PDCOLL	Number of persons not inhabiting a private dwelling

Estimated monthly rents

DRE4L	Less than 400 CHF
DRE46	From 400 to 599 CHF
DRE68	From 600 to 799 CHF
DRE810	From 800 to 999 CHF
DRE1014	From 1000 to 1399 CHF
DRE1418	From 1400 to 1799 CHF
DRE1822	From 1800 to 2199 CHF
DRE2224	From 2200 to 2399 CHF
DRE24M	2400 CHF or more
DRENTED	Rented dwellings
LPOP	Population's natural logarithm
RBOTHR	Perc. of buildings which principal purpose is not habitation
RBEHAB	Perc. of buildings exclusively for habitation
RBMIXHAB	Perc. of mixed-use buildings
RBSHELT	Perc. of shacks
RBBB19	Perc. of buildings built before 1919
RBB1945	Perc. of buildings built between 1919 and 1945
RBB4660	Perc. of buildings built between 1946 and 1960
RBB6170	Perc. of buildings built between 1961 and 1970
RBB7180	Perc. of buildings built between 1971 and 1980
RBB8190	Perc. of buildings built between 1981 and 1990
RBB9195	Perc. of buildings built between 1991 and 1995
RBB9600	Perc. of buildings built between 1996 and 2000
RBREN7180	Perc. of buildings renovated between 1971 and 1980
RBREN8190	Perc. of buildings renovated between 1981 and 1990
RBREN9195	Perc. of buildings renovated between 1991 and 1995
RBREN9600	Perc. of buildings renovated between 1996 and 2000
RBNOREN	Perc. of buildings not renovated
RBCOLL	Perc. of collective habitation buildings
RB1DW	Perc. of buildings with 1 dwelling unit

RB2DW	Perc. of buildings with 2 dwelling units
RB3T5DW	Perc. of buildings with 3 to 5 dwelling units
RB6T9DW	Perc. of buildings with 6 to 9 dwelling units
RB10T19DW	Perc. of buildings with 10 to 19 dwelling units
RB20MDW	Perc. of buildings with 20 or more dwelling units
RB1FL	Perc. of buildings with 1 floor
RB2FL	Perc. of buildings with 2 floors
RB3FL	Perc. of buildings with 3 floors
RB4FL	Perc. of buildings with 4 floors
RB5FL	Perc. of buildings with 5 floors
RB6T9FL	Perc. of buildings with 6 to 9 floors
RB10T14FL	Perc. of buildings with 10 to 14 floors
RB15MFL	Perc. of buildings with more than 15 floors

Building ownership status

RBOPRIV	Perc. of buildings owned by private persons
RBOPCOOP	Perc. of buildings owned by cooperatives of owners
RBOOCOOP	Perc. of buildings owned by an other cooperative
RBOREFD	Perc. of buildings owned by a real estate fund
RBOORECO	Perc. of buildings owned by an other real estate company
RBOBLDCO	Perc. of buildings owned by a building company
RBOINSCO	Perc. of buildings owned by an insurance company
RBOPREVCO	Perc. of buildings owned by a retirement fund company
RBOOTHFD	Perc. of buildings owned by an other institution
RBOASS	Perc. of buildings owned by an association
RBOOTHCO	Perc. of buildings owned by an other company
RBOPUBL	Perc. of buildings publically owned
RBOOTHO	Perc. of buildings owned by an other owner
RDOCCDW	Perc. of continuously occupied dwellings
RDSECDW	Perc. of part-time occupied dwellings (secondary homes, holiday dwellings)
RDUNOCCDW	Perc. of vacant dwellings
RDOOTHER	Perc. of dwelling units occupied only as address

Tenant status

RDORENT	Perc. of renters
RDOCOOP	Perc. of coop members
RDOFLO	Perc. of floor owners
RDOBO	Perc. of building owners
RDOBCOO	Perc. of building co-owners
RDOSERVD	Perc. of service dwelling holders
RDOFREED	Perc. of free dwelling holders
RDOFBAIL	Perc. of farm bail holders
RDOUNOCC	Perc. of vacant / not a dwelling unit (address)

Dwelling area

RDA20L	Perc. of dwellings with an area less than 20 m2 and unknown area
RDA2039	Perc. of dwellings with an area from 20 to 39.9 m2
RDA4059	Perc. of dwellings with an area from 40 to 59.9 m2
RDA6079	Perc. of dwellings with an area from 60 to 79.9 m2
RDA8099	Perc. of dwellings with an area from 80 to 99.9 m2
RDA100119	Perc. of dwellings with an area from 100 to 119.9 m2
RDA120139	Perc. of dwellings with an area from 120 to 139.9 m2
RDA140159	Perc. of dwellings with an area from 140 to 159.9 m2
RDA160179	Perc. of dwellings with an area from 160 to 179.9 m2
RDA180199	Perc. of dwellings with an area from 180 to 199.9 m2
RDA200M	Perc. of dwellings with an area of 200 m2 and more

Number of rooms by dwelling

RDRO1	Perc. of dwellings with 1 room (no bedroom)
RDRO2	Perc. of dwellings with 2 rooms (1 bedroom)
RDRO3	Perc. of dwellings with 3 rooms (2 bedrooms)
RDRO4	Perc. of dwellings with 4 rooms (3 bedrooms)
RDRO5	Perc. of dwellings with 5 rooms (4 bedrooms)
RDRO6	Perc. of dwellings with 6 rooms (5 bedrooms)
RDRO7M	Perc. of dwellings with 7 rooms (6 bedrooms) and more
RPD1R	Perc. of persons inhabiting a 1-room apartment
RPD2R	Perc. of persons inhabiting a 2-rooms apartment
RPD3R	Perc. of persons inhabiting a 3-rooms apartment
RPD4R	Perc. of persons inhabiting a 4-rooms apartment

RPD5R	Perc. of persons inhabiting a 5-rooms apartment
RPD6R	Perc. of persons inhabiting a 6-rooms apartment
RPD7MR	Perc. of persons inhabiting a 7-rooms or bigger apartment
RPDCOLL	Perc. of persons not habiting a private dwelling
RDRE4L	Perc. of dwellings where rent is less than 400 CHF
RDRE46	Perc. of dwellings where rent is between 400 and 599 CHF
RDRE68	Perc. of dwellings where rent is between 600 and 799 CHF
RDRE810	Perc. of dwellings where rent is between 800 and 999 CHF
RDRE1014	Perc. of dwellings where rent is between 1000 and 1399 CHF
RDRE1418	Perc. of dwellings where rent is between 1400 and 1799 CHF
RDRE1822	Perc. of dwellings where rent is between 1800 and 2199 CHF
RDRE2224	Perc. of dwellings where rent is between 2200 and 2399 CHF
RDRE24M	Perc. of dwellings where rent is 2400 CHF or more
RDRENTED	Percentage of rented dwellings
RLOGBAT	Mean number of dwellings by buiding
RPLOGOCC	Percentage of permanently occupied dwellings
RHHLOGOC	Mean number of households by occupied dwelling
SURFTOT	Total dwelling area
SURFOCC	Total area of permanently occupied dwellings
RSURFHAB	Mean inhabited area per person

ZipCodes* TOURISM - Touristic nights
Sources: Nights and arrivals data - 2009 / OFS

Variables	Description
HOTELS09	Number of hotels, 2009
BEDS09	Number of beds, 2009
ARRIV09	Number of arrivals, 2009
ARRIV_CH09	Number of swiss people's arrivals, 2009
ARRIV_FOR09	Number of foreigner's arrivals, 2009
NIGHTS09	Number of nights spent, 2009
NIGHTS_CH09	Number of nights spent by swiss, 2009
NIGHTS_FOR09	Number of nights spent by foreigners, 2009
HOTELS08	Number of hotels, 2008
BEDS08	Number of beds, 2008
ARRIV08	Number of arrivals, 2008
ARRIV_CH08	Number of swiss people's arrivals, 2008
ARRIV_FOR08	Number of foreigner's arrivals, 2008
NIGHTS08	Number of nights spent, 2008
NIGHTS_CH08	Number of nights spent by swiss, 2008
NIGHTS_FOR08	Number of nights spent by foreigners, 2008
HOTELS07	Number of hotels, 2007
BEDS07	Number of beds, 2007
ARRIV07	Number of arrivals, 2007
ARRIV_CH07	Number of swiss people's arrivals, 2007
ARRIV_FOR07	Number of foreigner's arrivals, 2007
NIGHTS07	Number of nights spent, 2007
NIGHTS_CH07	Number of nights spent by swiss, 2007
NIGHTS_FOR07	Number of nights spent by foreigners, 2007
HOTELS06	Number of hotels, 2006
BEDS06	Number of beds, 2006
ARRIV06	Number of arrivals, 2006
ARRIV_CH06	Number of swiss people's arrivals, 2006
ARRIV_FOR06	Number of foreigner's arrivals, 2006
NIGHTS06	Number of nights spent, 2006
NIGHTS_CH06	Number of nights spent by swiss, 2006
NIGHTS_FOR06	Number of nights spent by foreigners, 2006
HOTELSIZE09	Mean size of hotels, in number of beds, 2009
OCCURATE09	Occupancy rate, in mean number of nights per year a bed is occupied, 2009
FORRATE09	Percentage of nights spent by foreigners on the total of nights spent, 2009
STAY09	Average length of stay, in nights spent, 2009
STAY_CH09	Average length of stay of swiss people, in nights spent, 2009
STAY_FOR09	Average length of stay of foreigners, in nights spent, 2009

ZipCodes[®] NOGA - Number of firms and jobs by activity domain

Sources: Swiss Federal Business Census - 2008 / OFS

NOGA tot

Variables	Description
EST	Number of establishments
FTEQ	Number of jobs (full-time equivalents)
FTJ	Number of full-time jobs
PT1J	Number of heavy part-time jobs (50-90%)
PT2J	Number of light part-time jobs (10-50%)
J	Number of jobs
EST1	Number of establishments, primary sector
FTEQ1	Number of jobs (full-time equivalents), primary sector
FTJ1	Number of full-time jobs, primary sector
PT1J1	Number of heavy part-time jobs (50-90%), primary sector
PT2J1	Number of light part-time jobs (10-50%), primary sector
J1	Number of jobs, primary sector
EST2	Number of establishments, secondary sector
FTEQ2	Number of jobs (full-time equivalents), secondary sector
FTJ2	Number of full-time jobs, secondary sector
PT1J2	Number of heavy part-time jobs (50-90%), secondary sector
PT2J2	Number of light part-time jobs (10-50%), secondary sector
J2	Number of jobs, secondary sector
EST3	Number of establishments, tertiary sector
FTEQ3	Number of jobs (full-time equivalents), tertiary sector
FTJ3	Number of full-time jobs, tertiary sector
PT1J3	Number of heavy part-time jobs (50-90%), tertiary sector
PT2J3	Number of light part-time jobs (10-50%), tertiary sector
J3	Number of jobs, tertiary sector
EST01	Number of establishments in Agriculture
EST02	Number of establishments in Forestry
EST03	Number of establishments in Fishing industry
EST06	Number of establishments in Oil & Gas Industry
EST08	Number of establishments in Other mining
EST09	Number of establishments in Mining services
EST10	Number of establishments in Food industry
EST11	Number of establishments in Beverage industry
EST12	Number of establishments in Tobacco industry
EST13	Number of establishments in Textile industry
EST14	Number of establishments in Clothing industry
EST15	Number of establishments in Leather and shoe industry
EST16	Number of establishments in Wooden products industry
EST17	Number of establishments in Paper industry
EST18	Number of establishments in Printing industry
EST19	Number of establishments in Refining & Coke industry
EST20	Number of establishments in Chemical industry
EST21	Number of establishments in Pharmaceutical industry
EST22	Number of establishments in Rubber and plastic industry
EST23	Number of establishments in Other non metallic industry
EST24	Number of establishments in Steel mill industry
EST25	Number of establishments in Metal products industry
EST26	Number of establishments in Electronic goods industry
EST27	Number of establishments in Electrical goods industry
EST28	Number of establishments in Machine industry
EST29	Number of establishments in Car industry
EST30	Number of establishments in Other vehicle industry
EST31	Number of establishments in Furniture industry
EST32	Number of establishments in Other industry
EST33	Number of establishments in Repair industry
EST35	Number of establishments in Electric, gas and heating utilities
EST36	Number of establishments in Water utilities
EST37	Number of establishments in Water treatment
EST38	Number of establishments in Waste treatment & recuperation
EST39	Number of establishments in Depollution
EST41	Number of establishments in Building industry
EST42	Number of establishments in Civil engineering

EST43	Number of establishments in Specialized construction industry
EST45	Number of establishments in Auto dealerships and repair
EST46	Number of establishments in Wholesale trade
EST47	Number of establishments in Retail trade
EST49	Number of establishments in Ground transportation
EST50	Number of establishments in Fluvial and maritime transportation
EST51	Number of establishments in Air transportation
EST52	Number of establishments in Warehousing
EST53	Number of establishments in Postal services
EST55	Number of establishments in Accommodation
EST56	Number of establishments in Food & catering services
EST58	Number of establishments in Publishing
EST59	Number of establishments in Music & Film industry
EST60	Number of establishments in Radio & TV
EST61	Number of establishments in Telecommunications
EST62	Number of establishments in Computer services
EST63	Number of establishments in IT & Data services
EST64	Number of establishments in Bank & Finance
EST65	Number of establishments in Insurance
EST66	Number of establishments in Finance auxiliary services
EST68	Number of establishments in Real estate
EST69	Number of establishments in Law and accounting services
EST70	Number of establishments in Management & Management consulting
EST71	Number of establishments in Engineering & Architecture consulting
EST72	Number of establishments in R & D
EST73	Number of establishments in Advertising %& market studies
EST74	Number of establishments in Other consulting services
EST75	Number of establishments in Veterinary services
EST77	Number of establishments in Leasing and renting services
EST78	Number of establishments in Employment & HR services
EST79	Number of establishments in Travel services
EST80	Number of establishments in Security services
EST81	Number of establishments in Cleaning and landscaping services
EST82	Number of establishments in Other business services
EST84	Number of establishments in Public administration
EST85	Number of establishments in Education
EST86	Number of establishments in Health
EST87	Number of establishments in Residential care services
EST88	Number of establishments in Social services
EST90	Number of establishments in Creative activities
EST91	Number of establishments in Cultural services
EST92	Number of establishments in Gaming services
EST93	Number of establishments in Recreation services
EST94	Number of establishments in Lobbying and membership services
EST95	Number of establishments in Personal repair services
EST96	Number of establishments in Personal services
FTEQ01	Number of jobs (full-time equivalents) in Agriculture
FTEQ02	Number of jobs (full-time equivalents) in Forestry
FTEQ03	Number of jobs (full-time equivalents) in Fishing industry
FTEQ06	Number of jobs (full-time equivalents) in Oil & Gas Industry
FTEQ08	Number of jobs (full-time equivalents) in Other mining
FTEQ09	Number of jobs (full-time equivalents) in Mining services
FTEQ10	Number of jobs (full-time equivalents) in Food industry
FTEQ11	Number of jobs (full-time equivalents) in Beverage industry
FTEQ12	Number of jobs (full-time equivalents) in Tobacco industry
FTEQ13	Number of jobs (full-time equivalents) in Textile industry
FTEQ14	Number of jobs (full-time equivalents) in Clothing industry
FTEQ15	Number of jobs (full-time equivalents) in Leather and shoe industry
FTEQ16	Number of jobs (full-time equivalents) in Wooden products industry
FTEQ17	Number of jobs (full-time equivalents) in Paper industry
FTEQ18	Number of jobs (full-time equivalents) in Printing industry
FTEQ19	Number of jobs (full-time equivalents) in Refining & Coke industry
FTEQ20	Number of jobs (full-time equivalents) in Chemical industry
FTEQ21	Number of jobs (full-time equivalents) in Pharmaceutical industry
FTEQ22	Number of jobs (full-time equivalents) in Rubber and plastic industry

FTEQ23	Number of jobs (full-time equivalents) in Other non metallic industry
FTEQ24	Number of jobs (full-time equivalents) in Steel mill industry
FTEQ25	Number of jobs (full-time equivalents) in Metal products industry
FTEQ26	Number of jobs (full-time equivalents) in Electronic goods industry
FTEQ27	Number of jobs (full-time equivalents) in Electrical goods industry
FTEQ28	Number of jobs (full-time equivalents) in Machine industry
FTEQ29	Number of jobs (full-time equivalents) in Car industry
FTEQ30	Number of jobs (full-time equivalents) in Other vehicle industry
FTEQ31	Number of jobs (full-time equivalents) in Furniture industry
FTEQ32	Number of jobs (full-time equivalents) in Other industry
FTEQ33	Number of jobs (full-time equivalents) in Repair industry
FTEQ35	Number of jobs (full-time equivalents) in Electric, gas and heating utilities
FTEQ36	Number of jobs (full-time equivalents) in Water utilities
FTEQ37	Number of jobs (full-time equivalents) in Water treatment
FTEQ38	Number of jobs (full-time equivalents) in Waste treatment & recuperation
FTEQ39	Number of jobs (full-time equivalents) in Depollution
FTEQ41	Number of jobs (full-time equivalents) in Building industry
FTEQ42	Number of jobs (full-time equivalents) in Civil engineering
FTEQ43	Number of jobs (full-time equivalents) in Specialized construction industry
FTEQ45	Number of jobs (full-time equivalents) in Auto dealerships and repair
FTEQ46	Number of jobs (full-time equivalents) in Wholesale trade
FTEQ47	Number of jobs (full-time equivalents) in Retail trade
FTEQ49	Number of jobs (full-time equivalents) in Ground transportation
FTEQ50	Number of jobs (full-time equivalents) in Fluvial and maritime transportation
FTEQ51	Number of jobs (full-time equivalents) in Air transportation
FTEQ52	Number of jobs (full-time equivalents) in Warehousing
FTEQ53	Number of jobs (full-time equivalents) in Postal services
FTEQ55	Number of jobs (full-time equivalents) in Accommodation
FTEQ56	Number of jobs (full-time equivalents) in Food & catering services
FTEQ58	Number of jobs (full-time equivalents) in Publishing
FTEQ59	Number of jobs (full-time equivalents) in Music & Film industry
FTEQ60	Number of jobs (full-time equivalents) in Radio & TV
FTEQ61	Number of jobs (full-time equivalents) in Telecommunications
FTEQ62	Number of jobs (full-time equivalents) in Computer services
FTEQ63	Number of jobs (full-time equivalents) in IT & Data services
FTEQ64	Number of jobs (full-time equivalents) in Bank & Finance

FTEQ65	Number of jobs (full-time equivalents) in Insurance
FTEQ66	Number of jobs (full-time equivalents) in Finance auxiliary services
FTEQ68	Number of jobs (full-time equivalents) in Real estate
FTEQ69	Number of jobs (full-time equivalents) in Law and accounting services
FTEQ70	Number of jobs (full-time equivalents) in Management & Management consulting
FTEQ71	Number of jobs (full-time equivalents) in Engineering & Architecture consulting
FTEQ72	Number of jobs (full-time equivalents) in R & D
FTEQ73	Number of jobs (full-time equivalents) in Advertising %& market studies
FTEQ74	Number of jobs (full-time equivalents) in Other consulting services
FTEQ75	Number of jobs (full-time equivalents) in Veterinary services
FTEQ77	Number of jobs (full-time equivalents) in Leasing and renting services
FTEQ78	Number of jobs (full-time equivalents) in Employment & HR services
FTEQ79	Number of jobs (full-time equivalents) in Travel services
FTEQ80	Number of jobs (full-time equivalents) in Security services
FTEQ81	Number of jobs (full-time equivalents) in Cleaning and landscaping services
FTEQ82	Number of jobs (full-time equivalents) in Other business services
FTEQ84	Number of jobs (full-time equivalents) in Public administration
FTEQ85	Number of jobs (full-time equivalents) in Education
FTEQ86	Number of jobs (full-time equivalents) in Health
FTEQ87	Number of jobs (full-time equivalents) in Residential care services
FTEQ88	Number of jobs (full-time equivalents) in Social services
FTEQ90	Number of jobs (full-time equivalents) in Creative activities
FTEQ91	Number of jobs (full-time equivalents) in Cultural services
FTEQ92	Number of jobs (full-time equivalents) in Gaming services
FTEQ93	Number of jobs (full-time equivalents) in Recreation services
FTEQ94	Number of jobs (full-time equivalents) in Lobbying and membership services
FTEQ95	Number of jobs (full-time equivalents) in Personal repair services
FTEQ96	Number of jobs (full-time equivalents) in Personal services

ZipCodes* NOGA Trend - Firm & Job number evolution, 2001-2005

Sources: Swiss Federal Business Censuses - 2005 and 2008 / OFS

Variables	Description
EV0508EST	Evolution of the number of establishments
EV0508FTEQ	Evolution of the number of jobs (full-time equivalents)
EV0508FTJ	Evolution of the number of full-time jobs
EV0508PT1J	Evolution of the number of heavy part-time jobs (50-90%)
EV0508PT2J	Evolution of the number of light part-time jobs (10-50%)
EV0508J	Evolution of the number of jobs
EV0508EST1	Evolution of the number of establishments, primary sector
EV0508FTEQ1	Evolution of the number of jobs (full-time equivalents), primary sector
EV0508FTJ1	Evolution of the number of full-time jobs, primary sector
EV0508PT1J1	Evolution of the number of heavy part-time jobs (50-90%), primary sector
EV0508PT2J1	Evolution of the number of light part-time jobs (10-50%), primary sector
EV0508J1	Evolution of the number of jobs, primary sector
EV0508EST2	Evolution of the number of establishments, secondary sector
EV0508FTEQ2	Evolution of the number of jobs (full-time equivalents), secondary sector
EV0508FTJ2	Evolution of the number of full-time jobs, secondary sector
EV0508PT1J2	Evolution of the number of heavy part-time jobs (50-90%), secondary sector
EV0508PT2J2	Evolution of the number of light part-time jobs (10-50%), secondary sector
EV0508J2	Evolution of the number of jobs, secondary sector
EV0508EST3	Evolution of the number of establishments, tertiary sector
EV0508FTEQ3	Evolution of the number of jobs (full-time equivalents), tertiary sector
EV0508FTJ3	Evolution of the number of full-time jobs, tertiary sector
EV0508PT1J3	Evolution of the number of heavy part-time jobs (50-90%), tertiary sector
EV0508PT2J3	Evolution of the number of light part-time jobs (10-50%), tertiary sector
EV0508J3	Evolution of the number of jobs, tertiary sector
EV0508EST01	Evolution of the number of establishments in Agriculture
EV0508EST02	Evolution of the number of establishments in Forestry
EV0508EST03	Evolution of the number of establishments in Fishing industry
EV0508EST06	Evolution of the number of establishments in Oil & Gas Industry
EV0508EST08	Evolution of the number of establishments in Other mining
EV0508EST09	Evolution of the number of establishments in Mining services
EV0508EST10	Evolution of the number of establishments in Food industry
EV0508EST11	Evolution of the number of establishments in Beverage industry

EV0508EST12	Evolution of the number of establishments in Tobacco industry
EV0508EST13	Evolution of the number of establishments in Textile industry
EV0508EST14	Evolution of the number of establishments in Clothing industry
EV0508EST15	Evolution of the number of establishments in Leather and shoe industry
EV0508EST16	Evolution of the number of establishments in Wooden products industry
EV0508EST17	Evolution of the number of establishments in Paper industry
EV0508EST18	Evolution of the number of establishments in Printing industry
EV0508EST19	Evolution of the number of establishments in Refining & Coke industry
EV0508EST20	Evolution of the number of establishments in Chemical industry
EV0508EST21	Evolution of the number of establishments in Pharmaceutical industry
EV0508EST22	Evolution of the number of establishments in Rubber and plastic industry
EV0508EST23	Evolution of the number of establishments in Other non metallic industry
EV0508EST24	Evolution of the number of establishments in Steel mill industry
EV0508EST25	Evolution of the number of establishments in Metal products industry
EV0508EST26	Evolution of the number of establishments in Electronic goods industry
EV0508EST27	Evolution of the number of establishments in Electrical goods industry
EV0508EST28	Evolution of the number of establishments in Machine industry
EV0508EST29	Evolution of the number of establishments in Car industry
EV0508EST30	Evolution of the number of establishments in Other vehicle industry
EV0508EST31	Evolution of the number of establishments in Furniture industry
EV0508EST32	Evolution of the number of establishments in Other industry
EV0508EST33	Evolution of the number of establishments in Repair industry
EV0508EST35	Evolution of the number of establishments in Electric, gas and heating utilities
EV0508EST36	Evolution of the number of establishments in Water utilities
EV0508EST37	Evolution of the number of establishments in Water treatment
EV0508EST38	Evolution of the number of establishments in Waste treatment & recuperation
EV0508EST39	Evolution of the number of establishments in Remediation
EV0508EST41	Evolution of the number of establishments in Building industry
EV0508EST42	Evolution of the number of establishments in Civil engineering
EV0508EST43	Evolution of the number of establishments in Specialized construction industry
EV0508EST45	Evolution of the number of establishments in Auto dealerships and repair
EV0508EST46	Evolution of the number of establishments in Wholesale trade
EV0508EST47	Evolution of the number of establishments in Retail trade
EV0508EST49	Evolution of the number of establishments in Ground transportation
EV0508EST50	Evolution of the number of establishments in Fluvial and maritime transportation
EV0508EST51	Evolution of the number of establishments in Air transportation
EV0508EST52	Evolution of the number of establishments in Warehousing
EV0508EST53	Evolution of the number of establishments in Postal services
EV0508EST55	Evolution of the number of establishments in Accommodation
EV0508EST56	Evolution of the number of establishments in Food & catering services
EV0508EST58	Evolution of the number of establishments in Publishing
EV0508EST59	Evolution of the number of establishments in Music & Film industry
EV0508EST60	Evolution of the number of establishments in Radio & TV
EV0508EST61	Evolution of the number of establishments in Telecommunications
EV0508EST62	Evolution of the number of establishments in Computer services
EV0508EST63	Evolution of the number of establishments in IT & Data services
EV0508EST64	Evolution of the number of establishments in Bank & Finance
EV0508EST65	Evolution of the number of establishments in Insurance
EV0508EST66	Evolution of the number of establishments in Finance auxiliary services
EV0508EST68	Evolution of the number of establishments in Real estate
EV0508EST69	Evolution of the number of establishments in Law and accounting services
EV0508EST70	Evolution of the number of establishments in Management & Management consulting
EV0508EST71	Evolution of the number of establishments in Engineering & Architecture consulting
EV0508EST72	Evolution of the number of establishments in R & D
EV0508EST73	Evolution of the number of establishments in Advertising %& market studies
EV0508EST74	Evolution of the number of establishments in Other consulting services
EV0508EST75	Evolution of the number of establishments in Veterinary services
EV0508EST77	Evolution of the number of establishments in Leasing and renting services
EV0508EST78	Evolution of the number of establishments in Employment & HR services
EV0508EST79	Evolution of the number of establishments in Travel services
EV0508EST80	Evolution of the number of establishments in Security services
EV0508EST81	Evolution of the number of establishments in Cleaning and landscaping services
EV0508EST82	Evolution of the number of establishments in Other business services
EV0508EST84	Evolution of the number of establishments in Public administration
EV0508EST85	Evolution of the number of establishments in Education

EV0508EST86	Evolution of the number of establishments in Health
EV0508EST87	Evolution of the number of establishments in Residential care services
EV0508EST88	Evolution of the number of establishments in Social services
EV0508EST90	Evolution of the number of establishments in Creative activities
EV0508EST91	Evolution of the number of establishments in Cultural services
EV0508EST92	Evolution of the number of establishments in Gaming services
EV0508EST93	Evolution of the number of establishments in Recreation services
EV0508EST94	Evolution of the number of establishments in Lobbying and membership services
EV0508EST95	Evolution of the number of establishments in Personal repair services
EV0508EST96	Evolution of the number of establishments in Personal services
EV0508FTEQ01	Evolution of the number of jobs (full-time equivalents) in Agriculture
EV0508FTEQ02	Evolution of the number of jobs (full-time equivalents) in Forestry
EV0508FTEQ03	Evolution of the number of jobs (full-time equivalents) in Fishing industry
EV0508FTEQ06	Evolution of the number of jobs (full-time equivalents) in Oil & Gas Industry
EV0508FTEQ08	Evolution of the number of jobs (full-time equivalents) in Other mining
EV0508FTEQ09	Evolution of the number of jobs (full-time equivalents) in Mining services
EV0508FTEQ10	Evolution of the number of jobs (full-time equivalents) in Food industry
EV0508FTEQ11	Evolution of the number of jobs (full-time equivalents) in Beverage industry
EV0508FTEQ12	Evolution of the number of jobs (full-time equivalents) in Tobacco industry
EV0508FTEQ13	Evolution of the number of jobs (full-time equivalents) in Textile industry
EV0508FTEQ14	Evolution of the number of jobs (full-time equivalents) in Clothing industry
EV0508FTEQ15	Evolution of the number of jobs (full-time equivalents) in Leather and shoe industry
EV0508FTEQ16	Evolution of the number of jobs (full-time equivalents) in Wooden products industry
EV0508FTEQ17	Evolution of the number of jobs (full-time equivalents) in Paper industry
EV0508FTEQ18	Evolution of the number of jobs (full-time equivalents) in Printing industry
EV0508FTEQ19	Evolution of the number of jobs (full-time equivalents) in Refining & Coke industry
EV0508FTEQ20	Evolution of the number of jobs (full-time equivalents) in Chemical industry
EV0508FTEQ21	Evolution of the number of jobs (full-time equivalents) in Pharmaceutical industry
EV0508FTEQ22	Evolution of the number of jobs (full-time equivalents) in Rubber and plastic industry
EV0508FTEQ23	Evolution of the number of jobs (full-time equivalents) in Other non metallic industry
EV0508FTEQ24	Evolution of the number of jobs (full-time equivalents) in Steel mill industry
EV0508FTEQ25	Evolution of the number of jobs (full-time equivalents) in Metal products industry
EV0508FTEQ26	Evolution of the number of jobs (full-time equivalents) in Electronic goods industry
EV0508FTEQ27	Evolution of the number of jobs (full-time equivalents) in Electrical goods industry
EV0508FTEQ28	Evolution of the number of jobs (full-time equivalents) in Machine industry
EV0508FTEQ29	Evolution of the number of jobs (full-time equivalents) in Car industry
EV0508FTEQ30	Evolution of the number of jobs (full-time equivalents) in Other vehicle industry
EV0508FTEQ31	Evolution of the number of jobs (full-time equivalents) in Furniture industry
EV0508FTEQ32	Evolution of the number of jobs (full-time equivalents) in Other industry
EV0508FTEQ33	Evolution of the number of jobs (full-time equivalents) in Repair industry
EV0508FTEQ35	Evolution of the number of jobs (full-time equivalents) in Electric, gas and heating utilities
EV0508FTEQ36	Evolution of the number of jobs (full-time equivalents) in Water utilities
EV0508FTEQ37	Evolution of the number of jobs (full-time equivalents) in Water treatment
EV0508FTEQ38	Evolution of the number of jobs (full-time equivalents) in Waste treatment & recuperation
EV0508FTEQ39	Evolution of the number of jobs (full-time equivalents) in Remediation
EV0508FTEQ41	Evolution of the number of jobs (full-time equivalents) in Building industry
EV0508FTEQ42	Evolution of the number of jobs (full-time equivalents) in Civil engineering
EV0508FTEQ43	Evolution of the number of jobs (full-time equivalents) in Specialized construction industry
EV0508FTEQ45	Evolution of the number of jobs (full-time equivalents) in Auto dealerships and repair
EV0508FTEQ46	Evolution of the number of jobs (full-time equivalents) in Wholesale trade
EV0508FTEQ47	Evolution of the number of jobs (full-time equivalents) in Retail trade
EV0508FTEQ49	Evolution of the number of jobs (full-time equivalents) in Ground transportation
EV0508FTEQ50	Evolution of the number of jobs (full-time equivalents) in Fluvial and maritime transportation
EV0508FTEQ51	Evolution of the number of jobs (full-time equivalents) in Air transportation
EV0508FTEQ52	Evolution of the number of jobs (full-time equivalents) in Warehousing
EV0508FTEQ53	Evolution of the number of jobs (full-time equivalents) in Postal services
EV0508FTEQ55	Evolution of the number of jobs (full-time equivalents) in Accommodation
EV0508FTEQ56	Evolution of the number of jobs (full-time equivalents) in Food & catering services
EV0508FTEQ58	Evolution of the number of jobs (full-time equivalents) in Publishing
EV0508FTEQ59	Evolution of the number of jobs (full-time equivalents) in Music & Film industry
EV0508FTEQ60	Evolution of the number of jobs (full-time equivalents) in Radio & TV
EV0508FTEQ61	Evolution of the number of jobs (full-time equivalents) in Telecommunications
EV0508FTEQ62	Evolution of the number of jobs (full-time equivalents) in Computer services
EV0508FTEQ63	Evolution of the number of jobs (full-time equivalents) in IT & Data services
EV0508FTEQ64	Evolution of the number of jobs (full-time equivalents) in Bank & Finance
EV0508FTEQ65	Evolution of the number of jobs (full-time equivalents) in Insurance
EV0508FTEQ66	Evolution of the number of jobs (full-time equivalents) in Finance auxiliary services
EV0508FTEQ68	Evolution of the number of jobs (full-time equivalents) in Real estate
EV0508FTEQ69	Evolution of the number of jobs (full-time equivalents) in Law and accounting services
EV0508FTEQ70	Evolution of the number of jobs (full-time equivalents) in Management & Management consulting
EV0508FTEQ71	Evolution of the number of jobs (full-time equivalents) in Engineering & Architecture consulting
EV0508FTEQ72	Evolution of the number of jobs (full-time equivalents) in R & D
EV0508FTEQ73	Evolution of the number of jobs (full-time equivalents) in Advertising %& market studies

EV0508FTEQ74	Evolution of the number of jobs (full-time equivalents) in Other consulting services
EV0508FTEQ75	Evolution of the number of jobs (full-time equivalents) in Veterinary services
EV0508FTEQ77	Evolution of the number of jobs (full-time equivalents) in Leasing and renting services
EV0508FTEQ78	Evolution of the number of jobs (full-time equivalents) in Employment & HR services
EV0508FTEQ79	Evolution of the number of jobs (full-time equivalents) in Travel services
EV0508FTEQ80	Evolution of the number of jobs (full-time equivalents) in Security services
EV0508FTEQ81	Evolution of the number of jobs (full-time equivalents) in Cleaning and landscaping services
EV0508FTEQ82	Evolution of the number of jobs (full-time equivalents) in Other business services
EV0508FTEQ84	Evolution of the number of jobs (full-time equivalents) in Public administration
EV0508FTEQ85	Evolution of the number of jobs (full-time equivalents) in Education
EV0508FTEQ86	Evolution of the number of jobs (full-time equivalents) in Health
EV0508FTEQ87	Evolution of the number of jobs (full-time equivalents) in Residential care services
EV0508FTEQ88	Evolution of the number of jobs (full-time equivalents) in Social services
EV0508FTEQ90	Evolution of the number of jobs (full-time equivalents) in Creative activities
EV0508FTEQ91	Evolution of the number of jobs (full-time equivalents) in Cultural services
EV0508FTEQ92	Evolution of the number of jobs (full-time equivalents) in Gaming services
EV0508FTEQ93	Evolution of the number of jobs (full-time equivalents) in Recreation services
EV0508FTEQ94	Evolution of the number of jobs (full-time equivalents) in Lobbying and membership services
EV0508FTEQ95	Evolution of the number of jobs (full-time equivalents) in Personal repair services
EV0508FTEQ96	Evolution of the number of jobs (full-time equivalents) in Personal services

Sheet2

B05AS	Total number of establishments
B05VZA	Number of jobs (full-time equivalents)
B05S1	Total number of establishments, primary sector
B05S2	Total number of establishments, secondary sector
B05S3	Total number of establishments, tertiary sector
B05VZAS1	Number of jobs (full-time equivalents), primary sector
B05VZAS2	Number of jobs (full-time equivalents), secondary sector
B05VZAS3	Number of jobs (full-time equivalents), tertiary sector
B05VZTS1	Number of full-time jobs, primary sector
B05VZFS1	Number of full-time jobs occupied by women, primary sector
B05VZMS1	Number of full-time jobs occupied by men, primary sector
B05TZTS1	Number of part-time jobs, primary sector
B05TZFS1	Number of part-time jobs occupied by women, primary sector
B05TZMS1	Number of part-time jobs occupied by men, primary sector
B05T1TS1	Number of heavy part-time jobs (50-90%), primary sector
B05T1FS1	Number of heavy part-time jobs (50-90%) occupied by women, primary sector
B05T1MS1	Number of heavy part-time jobs (50-90%) occupied by men, primary sector
B05T2TS1	Number of light part-time jobs (10-50%), primary sector
B05T2FS1	Number of light part-time jobs (10-50%) occupied by women, primary sector
B05T2MS1	Number of light part-time jobs (10-50%) occupied by men, primary sector
B05VZTS2	Number of full-time jobs, secondary sector
B05VZFS2	Number of full-time jobs occupied by women, secondary sector
B05VZMS2	Number of full-time jobs occupied by men, secondary sector
B05TZTS2	Number of part-time jobs, secondary sector
B05TZFS2	Number of part-time jobs occupied by women, secondary sector
B05TZMS2	Number of part-time jobs occupied by men, secondary sector
B05T1TS2	Number of heavy part-time jobs (50-90%), secondary sector
B05T1FS2	Number of heavy part-time jobs (50-90%) occupied by women, secondary sector
B05T1MS2	Number of heavy part-time jobs (50-90%) occupied by men, secondary sector
B05T2TS2	Number of light part-time jobs (10-50%), secondary sector
B05T2FS2	Number of light part-time jobs (10-50%) occupied by women, secondary sector
B05T2MS2	Number of light part-time jobs (10-50%) occupied by men, secondary sector
B05VZTS3	Number of full-time jobs, tertiary sector
B05VZFS3	Number of full-time jobs occupied by women, tertiary sector
B05VZMS3	Number of full-time jobs occupied by men, tertiary sector
B05TZTS3	Number of part-time jobs, tertiary sector
B05TZFS3	Number of part-time jobs occupied by women, tertiary sector
B05TZMS3	Number of part-time jobs occupied by men, tertiary sector
B05T1TS3	Number of heavy part-time jobs (50-90%), tertiary sector
B05T1FS3	Number of heavy part-time jobs (50-90%) occupied by women, tertiary sector
B05T1MS3	Number of heavy part-time jobs (50-90%) occupied by men, tertiary sector
B05T2TS3	Number of light part-time jobs (10-50%), tertiary sector
B05T2FS3	Number of light part-time jobs (10-50%) occupied by women, tertiary sector
B05T2MS3	Number of light part-time jobs (10-50%) occupied by men, tertiary sector
B0501AS	Number of establishments in: Agriculture

Sheet2

B0502AS	Number of establishments in:	Sylviculture
B0505AS	Number of establishments in:	Fishing & Hunting
B0510AS	Number of establishments in:	Coal extraction
B0511AS	Number of establishments in:	Oil & Gas extraction
B0512AS	Number of establishments in:	Uranium extraction
B0513AS	Number of establishments in:	Metallic ore extraction
B0514AS	Number of establishments in:	Quarries and gravel pits
B0515AS	Number of establishments in:	Food and beverage industry
B0516AS	Number of establishments in:	Tobacco industry
B0517AS	Number of establishments in:	Textile industry
B0518AS	Number of establishments in:	Clothing industry
B0519AS	Number of establishments in:	Leather industry
B0520AS	Wood	
B0521AS	Number of establishments in:	Paper industry
B0522AS	Number of establishments in:	
B0523AS	Number of establishments in:	
B0524AS	Number of establishments in:	Chemical industry
B0525AS	Number of establishments in:	
B0526AS	Number of establishments in:	
B0527AS	Number of establishments in:	Metallurgy, steel industry, foundry
B0528AS	Number of establishments in:	Metallic manufacture
B0529AS	Number of establishments in:	Machine industry
B0530AS	Number of establishments in:	
B0531AS	Number of establishments in:	
B0532AS	Number of establishments in:	Electrical
B0533AS	Number of establishments in:	Radio, TV, Watchmaking
B0534AS	Number of establishments in:	Automobile industry
B0535AS	Number of establishments in:	Other transportation means industry
B0536AS	Number of establishments in:	
B0537AS	Number of establishments in:	Recycling
B0540AS	Electricity	
B0541AS	Number of establishments in:	Water management
B0545AS	Number of establishments in:	Building industry
B0550AS	Car retail	
B0551AS	Number of establishments in:	
B0552AS	Number of establishments in:	
B0555AS	Number of establishments in:	Catering
B0560AS	Number of establishments in:	Terrestrial transportation
B0561AS	Number of establishments in:	Fluvial and sea transportation
B0562AS	Number of establishments in:	Air transportation
B0563AS	Number of establishments in:	Storage
B0564AS	Number of establishments in:	Postal and telecommunications services
B0565AS	Number of establishments in:	Bank and finance
B0566AS	Number of establishments in:	Insurance
B0567AS	Number of establishments in:	

Sheet2

B0570AS	Number of establishments in: Real estate
B0571AS	Number of establishments in: Rental
B0572AS	Number of establishments in: Computer industry
B0573AS	Number of establishments in: Research and development
B0574AS	Number of establishments in: Business services
B0575AS	Number of establishments in: Public administration
B0580AS	Number of establishments in: Education
B0585AS	Number of establishments in: Health and social services
B0590AS	establish
B0591AS	Lobbying
B0592AS	Number of establishments in: Culture, sport and recreation
B0593AS	Number of establishments in: Personal services
B0501VZA	Number of jobs (full-time equivalents) in: Agriculture
B0502VZA	Number of jobs (full-time equivalents) in: Sylviculture
B0505VZA	Number of jobs (full-time equivalents) in: Fishing & Hunting
B0510VZA	Number of jobs (full-time equivalents) in: Coal extraction
B0511VZA	Number of jobs (full-time equivalents) in: Oil & Gas extraction
B0512VZA	Number of jobs (full-time equivalents) in: Uranium extraction
B0513VZA	Number of jobs (full-time equivalents) in: Metallic ore extraction
B0514VZA	equivalent s) in:
B0515VZA	equivalent s) in:
B0516VZA	Number of jobs (full-time equivalents) in: Tobacco industry
B0517VZA	Number of jobs (full-time equivalents) in: Textile industry
B0518VZA	Number of jobs (full-time equivalents) in: Clothing industry
B0519VZA	Number of jobs (full-time equivalents) in: Leather industry
B0520VZA	s) in: Wood
B0521VZA	equivalent
B0522VZA	s) in:
B0523VZA	(full-time equivalent
B0524VZA	Number of jobs (full-time equivalents) in: Chemical industry
B0525VZA	equivalent s) in:
B0526VZA	equivalent
B0527VZA	Number of jobs (full-time equivalents) in: Metallurgy, steel industry, foundry
B0528VZA	Number of jobs (full-time equivalents) in: Metallic manufacture
B0529VZA	Number of jobs (full-time equivalents) in: Machine industry
B0530VZA	equivalent s) in:
B0531VZA	s) in:
B0532VZA	s) in:
B0533VZA	s) in:
B0534VZA	Number of jobs (full-time equivalents) in: Automobile industry
B0535VZA	Number of jobs (full-time equivalents) in: Other transportation means industry
B0536VZA	equivalent s) in:
B0537VZA	Number of jobs (full-time equivalents) in: Recycling
B0540VZA	s) in: Electricity
B0541VZA	Number of jobs (full-time equivalents) in: Water management

Sheet2

B0545VZA	Number of jobs (full-time equivalents) in: Building industry
B0550VZA	s) in: Car
B0551VZA	equivalent
B0552VZA	equivalent
B0555VZA	Number of jobs (full-time equivalents) in: Catering
B0560VZA	Number of jobs (full-time equivalents) in: Terrestrial transportation
B0561VZA	Number of jobs (full-time equivalents) in: Fluvial and sea transportation
B0562VZA	Number of jobs (full-time equivalents) in: Air transportation
B0563VZA	s) in:
B0564VZA	Number of jobs (full-time equivalents) in: Postal and telecommunications services
B0565VZA	Number of jobs (full-time equivalents) in: Bank and finance
B0566VZA	Number of jobs (full-time equivalents) in: Insurance
B0567VZA	equivalent
B0570VZA	Number of jobs (full-time equivalents) in: Real estate
B0571VZA	(full-time equivalent
B0572VZA	Number of jobs (full-time equivalents) in: Computer industry
B0573VZA	Number of jobs (full-time equivalents) in: Research and development
B0574VZA	Number of jobs (full-time equivalents) in: Business services
B0575VZA	equivalent
B0580VZA	Number of jobs (full-time equivalents) in: Education
B0585VZA	Number of jobs (full-time equivalents) in: Health and social services
B0590VZA	(full-time equivalent
B0591VZA	s) in: Lobbying
B0592VZA	Number of jobs (full-time equivalents) in: Culture, sport and recreation
B0593VZA	Number of jobs (full-time equivalents) in: Personal services

end - Firm & Job number evolution - General Business Censuses - 20

Variables	Description
E0105AS	Evolution of the number of establishments
E0105VZA	Evolution of the number of jobs (full-time equivalents)
E0105S1	Evolution of the number of establishments, primary sector
E0105S2	Evolution of the number of establishments, secondary sector
E0105S3	Evolution of the number of establishments, tertiary sector
E0105VZAS1	Evolution of the number of jobs (full-time equivalents), primary sector
E0105VZAS2	Evolution of the number of jobs (full-time equivalents), secondary sector
E0105VZAS3	Evolution of the number of jobs (full-time equivalents), tertiary sector
E0105VZTS1	Evolution of the number of full-time jobs, primary sector
E0105VZFS1	Evolution of the number of full-time jobs occupied by women, primary sector
E0105VZMS1	Evolution of the number of full-time jobs occupied by men, primary sector
E0105TZTS1	Evolution of the number of part-time jobs, primary sector
E0105TZFS1	Evolution of the number of part-time jobs occupied by women, primary sector
E0105TZMS1	Evolution of the number of part-time jobs occupied by men, primary sector

Sheet2

E0105T1TS1	Evolution of the number of heavy part-time jobs (50-90%), primary sector
E0105T1FS1	Evolution of the number of heavy part-time jobs (50-90%) occupied by women, primary sector
E0105T1MS1	Evolution of the number of heavy part-time jobs (50-90%) occupied by men, primary sector
E0105T2TS1	Evolution of the number of light part-time jobs (10-50%), primary sector
E0105T2FS1	Evolution of the number of light part-time jobs (10-50%) occupied by women, primary sector
E0105T2MS1	Evolution of the number of light part-time jobs (10-50%) occupied by men, primary sector
E0105VZTS2	Evolution of the number of full-time jobs, secondary sector
E0105VZFS2	Evolution of the number of full-time jobs occupied by women, secondary sector
E0105VZMS2	Evolution of the number of full-time jobs occupied by men, secondary sector
E0105TZTS2	Evolution of the number of part-time jobs, secondary sector
E0105TZFS2	Evolution of the number of part-time jobs occupied by women, secondary sector
E0105TZMS2	Evolution of the number of part-time jobs occupied by men, secondary sector
E0105T1TS2	Evolution of the number of heavy part-time jobs (50-90%), secondary sector
E0105T1FS2	Evolution of the number of heavy part-time jobs (50-90%) occupied by women, secondary sector
E0105T1MS2	Evolution of the number of heavy part-time jobs (50-90%) occupied by men, secondary sector
E0105T2TS2	Evolution of the number of light part-time jobs (10-50%), secondary sector
E0105T2FS2	Evolution of the number of light part-time jobs (10-50%) occupied by women, secondary sector
E0105T2MS2	Evolution of the number of light part-time jobs (10-50%) occupied by men, secondary sector
E0105VZTS3	Evolution of the number of full-time jobs, tertiary sector
E0105VZFS3	Evolution of the number of full-time jobs occupied by women, tertiary sector
E0105VZMS3	Evolution of the number of full-time jobs occupied by men, tertiary sector
E0105TZTS3	Evolution of the number of part-time jobs, tertiary sector
E0105TZFS3	Evolution of the number of part-time jobs occupied by women, tertiary sector
E0105TZMS3	Evolution of the number of part-time jobs occupied by men, tertiary sector
E0105T1TS3	Evolution of the number of heavy part-time jobs (50-90%), tertiary sector
E0105T1FS3	Evolution of the number of heavy part-time jobs (50-90%) occupied by women, tertiary sector
E0105T1MS3	Evolution of the number of heavy part-time jobs (50-90%) occupied by men, tertiary sector
E0105T2TS3	Evolution of the number of light part-time jobs (10-50%), tertiary sector
E0105T2FS3	Evolution of the number of light part-time jobs (10-50%) occupied by women, tertiary sector
E0105T2MS3	Evolution of the number of light part-time jobs (10-50%) occupied by men, tertiary sector
E010501AS	Evolution of the number of establishments in: Agriculture
E010502AS	Evolution of the number of establishments in: Sylviculture
E010505AS	Evolution of the number of establishments in: Fishing & Hunting
E010510AS	Evolution of the number of establishments in: Coal extraction
E010511AS	Evolution of the number of establishments in: Oil & Gas extraction
E010512AS	Evolution of the number of establishments in: Uranium extraction
E010513AS	Evolution of the number of establishments in: Metallic ore extraction
E010514AS	Evolution of the number of establishments in: Quarries and gravel pits
E010515AS	Evolution of the number of establishments in: Food and beverage industry
E010516AS	Evolution of the number of establishments in: Tobacco industry
E010517AS	Evolution of the number of establishments in: Textile industry
E010518AS	Evolution of the number of establishments in: Clothing industry
E010519AS	Evolution of the number of establishments in: Leather industry
E010520AS	Evolution of the number of establishments in: Wood
E010521AS	Evolution of the number of establishments in: Paper industry

Sheet2

E010522AS	ments in:
E010523AS	establish
E010524AS	Evolution of the number of establishments in: Chemical industry
E010525AS	establish
E010526AS	ments in:
E010527AS	establish
E010527AS	Evolution of the number of establishments in: Metallurgy, steel industry, foundry
E010528AS	Evolution of the number of establishments in: Metallic manufacture
E010529AS	Evolution of the number of establishments in: Machine industry
E010530AS	establish
E010531AS	ments in:
E010532AS	ments in:
E010533AS	ments in:
E010534AS	Evolution of the number of establishments in: Automobile industry
E010535AS	Evolution of the number of establishments in: Other transportation means industry
E010536AS	establish
E010537AS	Evolution of the number of establishments in: Recycling
E010540AS	Electricity
E010541AS	Evolution of the number of establishments in: Water management
E010545AS	Evolution of the number of establishments in: Building industry
E010550AS	ments in:
E010551AS	Car retail
E010551AS	establish
E010552AS	establish
E010555AS	Evolution of the number of establishments in: Catering
E010560AS	Evolution of the number of establishments in: Terrestrial transportation
E010561AS	Evolution of the number of establishments in: Fluvial and sea transportation
E010562AS	Evolution of the number of establishments in: Air transportation
E010563AS	ments in:
E010564AS	Evolution of the number of establishments in: Postal and telecommunications services
E010565AS	Evolution of the number of establishments in: Bank and finance
E010566AS	Evolution of the number of establishments in: Insurance
E010567AS	establish
E010570AS	Evolution of the number of establishments in: Real estate
E010571AS	Evolution of the number of establishments in: Rental
E010572AS	Evolution of the number of establishments in: Computer industry
E010573AS	Evolution of the number of establishments in: Research and development
E010574AS	Evolution of the number of establishments in: Business services
E010575AS	Evolution of the number of establishments in: Public administration
E010580AS	Evolution of the number of establishments in: Education
E010585AS	Evolution of the number of establishments in: Health and social services
E010590AS	number of
E010591AS	establish
E010591AS	ments in:
E010592AS	Lohvina
E010592AS	Evolution of the number of establishments in: Culture, sport and recreation
E010593AS	Evolution of the number of establishments in: Personal services
E010501VZA	Evolution of the number of jobs (full-time equivalents) in: Agriculture
E010502VZA	Evolution of the number of jobs (full-time equivalents) in: Sylviculture

Sheet2

E010505VZA	Evolution of the number of jobs (full-time equivalents) in: Fishing & Hunting
E010510VZA	Evolution of the number of jobs (full-time equivalents) in: Coal extraction
E010511VZA	Evolution of the number of jobs (full-time equivalents) in: Oil & Gas extraction
E010512VZA	Evolution of the number of jobs (full-time equivalents) in: Uranium extraction
E010513VZA	Evolution of the number of jobs (full-time equivalents) in: Metallic ore extraction
E010514VZA	time equivalent
E010515VZA	time equivalent
E010516VZA	Evolution of the number of jobs (full-time equivalents) in: Tobacco industry
E010517VZA	Evolution of the number of jobs (full-time equivalents) in: Textile industry
E010518VZA	Evolution of the number of jobs (full-time equivalents) in: Clothing industry
E010519VZA	Evolution of the number of jobs (full-time equivalents) in: Leather industry
E010520VZA	equivalent
E010521VZA	time
E010522VZA	equivalent
E010523VZA	jobs (full-time
E010524VZA	Evolution of the number of jobs (full-time equivalents) in: Chemical industry
E010525VZA	time equivalent
E010526VZA	time
E010527VZA	Evolution of the number of jobs (full-time equivalents) in: Metallurgy, steel industry, foundr
E010528VZA	Evolution of the number of jobs (full-time equivalents) in: Metallic manufacture
E010529VZA	Evolution of the number of jobs (full-time equivalents) in: Machine industry
E010530VZA	time equivalent
E010531VZA	equivalent
E010532VZA	equivalent
E010533VZA	equivalent
E010534VZA	Evolution of the number of jobs (full-time equivalents) in: Automobile industry
E010535VZA	Evolution of the number of jobs (full-time equivalents) in: Other transportation means ind
E010536VZA	time equivalent
E010537VZA	Evolution of the number of jobs (full-time equivalents) in: Recycling
E010540VZA	equivalent
E010541VZA	Evolution of the number of jobs (full-time equivalents) in: Water management
E010545VZA	Evolution of the number of jobs (full-time equivalents) in: Building industry
E010550VZA	equivalent
E010551VZA	time
E010552VZA	time
E010555VZA	Evolution of the number of jobs (full-time equivalents) in: Catering
E010560VZA	Evolution of the number of jobs (full-time equivalents) in: Terrestrial transportation
E010561VZA	Evolution of the number of jobs (full-time equivalents) in: Fluvial and sea transportation
E010562VZA	Evolution of the number of jobs (full-time equivalents) in: Air transportation
E010563VZA	equivalent
E010564VZA	Evolution of the number of jobs (full-time equivalents) in: Postal and telecommunications se
E010565VZA	Evolution of the number of jobs (full-time equivalents) in: Bank and finance
E010566VZA	Evolution of the number of jobs (full-time equivalents) in: Insurance
E010567VZA	time
E010570VZA	Evolution of the number of jobs (full-time equivalents) in: Real estate

Sheet2

E010571VZA	jobs (full-time
E010572VZA	Evolution of the number of jobs (full-time equivalents) in: Computer industry
E010573VZA	Evolution of the number of jobs (full-time equivalents) in: Research and development
E010574VZA	Evolution of the number of jobs (full-time equivalents) in: Business services
E010575VZA	time equivalent
E010580VZA	Evolution of the number of jobs (full-time equivalents) in: Education
E010585VZA	Evolution of the number of jobs (full-time equivalents) in: Health and social services
E010590VZA	jobs (full-time
E010591VZA	equivalent s) in:
E010592VZA	Evolution of the number of jobs (full-time equivalents) in: Culture, sport and recreation
E010593VZA	Evolution of the number of jobs (full-time equivalents) in: Personal services

Sheet2

ctor
r

or

sector
.tor

ector
or

.tor
.

or

y

ustry

ervices

